



**Skilled
Trades**
Ontario

**Métiers
spécialisés**
Ontario

Apprenticeship
Curriculum Standard

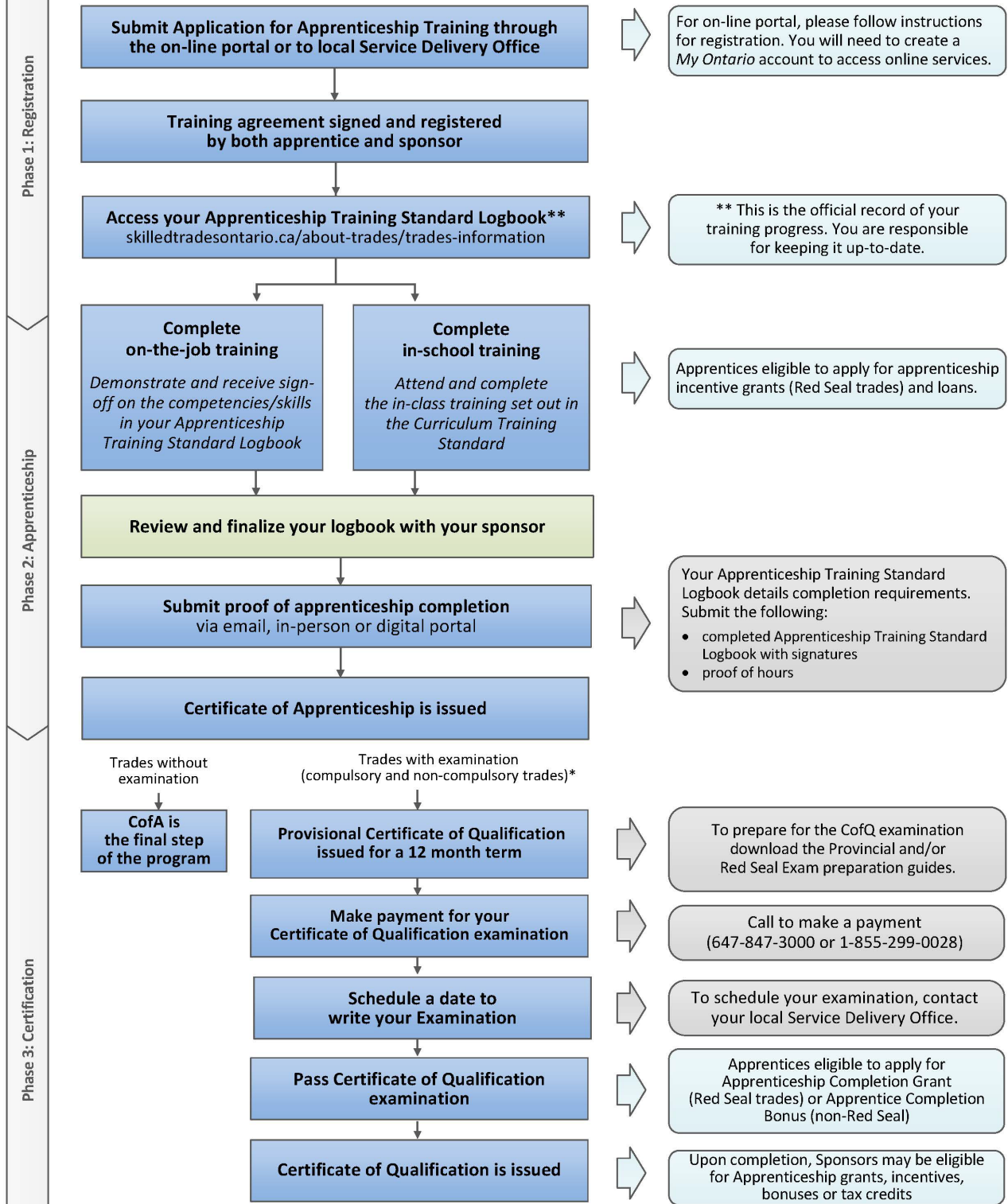
Steamfitter

Level 3

307A

2009

Apprenticeship Pathway to a Certificate of Qualification



* For a list of trades subject to a certification examination, visit: skilledtradesontario.ca

Table of Contents

Preface.....	7
Reportable Subject Summary-Level 3.....	8
S0932: Fluid Power Systems.....	9
S0932.1: Pneumatic System Safety	11
S0932.2: Pneumatic System Types.....	12
S0932.3: Pneumatic System Components	13
S0932.4: Pneumatic System Drawings.....	15
S0932.5: Pneumatic System Controls	16
S0932.6: Pneumatic System Commissioning	17
S0932.7: Hydraulic Systems Principles	18
S0932.8: Hydraulic Oils	19
S0932.9: Hydraulic Reservoirs	20
S0932.10: Hydraulic Oil Filters	21
S0935.11: Hydraulic Cylinders	22
S0932.12: Hydraulic Pumps	23
S0932.13: Hydraulic Valves and Controls	24
S0932.14: Hydraulic Piping Supports	25
S0932.15: Hydraulic System Drawings.....	26
S0932.16: Hydraulic System Commissioning	28
S0932.17: Programmable Logic Controllers	29
S0933: Steamfitting Systems III.....	30
S0933.1: Process Piping Systems.....	32
S0933.2: Medical Gas Systems.....	33
S0933.3: Sprinkler and Standpipe Installations	34
S0933.4: Fuel Gas Properties and Codes	39
S0933.5: Fuel Gas Meters and Regulators.....	41
S0933.6: Fuel Gas Piping Practices	43
S0933.7: Fuel Gas Pipe Sizing.....	45
S0933.8: Fuel Gas Combustion.....	46
S0933.9: Fuel Gas Venting.....	48

S0933.10: Fuel Gas Burners and Controls	49
S0933.11: Fuel Gas System Commissioning	51
S0933.12: Building Heat Loss Calculations	52
S0933.13: Hydronic Heating System Design	53
S0933.14: Principles of Refrigeration	55
S0933.15: Basic Refrigeration Cycle	56
S0933.15: Refrigeration System Components.....	57
S0933.17: Refrigeration System Commissioning.....	62
S0933.18: Principles of Air Conditioning.....	63
S0933.19: Psychometrics	64
S0933.20: Air Conditioning Applications.....	65
S0933.21: Air Conditioning System Components	67
S0933.22: Air Conditioning System Commissioning.....	68
S0933.23: Heat Pump Principles and Applications.....	69
S0933.24: Solar Heat	72
S0933.25: Introduction to High Temperature Hot Water Systems	73
S0933.26: Direct Return High Temperature Hot Water Systems.....	75
S0933.27: Pressurization of High Temperature Hot Water Systems	76
S0933.28: High Temperature Hot Water System Components	77
S0933.29: Commissioning High Temperature Hot Water Systems	79
S0933.30: Cross Connection and Backflow Prevention.....	80
S0934: Trade Documentation III.....	82
S0934.1: Computer-Aided Design	84
S0934.2: Process Flow Diagrams.....	85
S0934.3: Spool Sheets	86
S0934.4: Plan Drawings	87
S0934.5: Manufacturers' Diagrams	88
S0934.6: Job Specifications	89
S0934.7: Labour and Material Estimates.....	90
S0934.8: Job Schedules and Critical Path Planning.....	91
S0934.9: Memorandums, Reports, Estimates and Forms	92
S0934.10: Meeting Organization	93

S0934.11: Job Resumes	94
S0935: Welding III	95
S0935.1: Welding Codes and Standards.....	96
S0935.2: Welding Metallurgy and Quality Control	97
S0935.3: Shielded Metal Arc Welding	99
S0935.4: Metal Inert Gas Welding	100
S0935.5: Tungsten Inert Gas Welding.....	103

Please Note: This Standard has been revised to reflect the visual identity of Skilled Trades Ontario (STO) which replaced the Ontario College of Trades on January 1, 2022. The content of this Standard may refer to the former organization; however, all trade specific information or content remains relevant and accurate based on the original date of publishing.

Please refer to STO's website: skilledtradesontario.ca for the most accurate and up to date information. For information about BOSTA and its regulations, please visit [Building Opportunities in the Skilled Trades Act, 2021 \(BOSTA\)](#).

Any updates to this publication are available on-line; to download this document in PDF format, please follow the link: Skilled Trades Ontario.ca.

© 2022, Skilled Trades Ontario. All rights reserved. No part of this publication may be reproduced in any form whatsoever without the prior permission from Skilled Trades Ontario.

Maintained with transfer to Skilled Trades Ontario 2009 (V100)

Preface

This curriculum standard for the Steamfitter trade program is based upon the on-the-job performance objectives, located in the industry-approved training standard.

The curriculum is organized into 3 levels of training. The Reportable Subjects Summary chart (located on page 6) summarizes the training hours for each reportable subject.

The curriculum identifies the learning that takes place in-school. The in-school program focuses primarily on the theoretical knowledge and the essential skills required to support the performance objectives of the Apprenticeship Training Standards.

Employers/Sponsors are expected to extend the apprentice's knowledge and skills through practical training on a work site. Regular evaluations of the apprentice's knowledge and skills are conducted throughout training to verify that all apprentices have achieved the learning outcomes identified in the curriculum standard.

It is not the intent of the in-school curriculum to perfect on-the-job skills. The practical portion of the in-school program is used to reinforce theoretical knowledge. Skill training is provided on the job.

Please refer to Skilled Trades Ontario website (www.skilledtradesontario.ca) for the most accurate and up-to-date information about Skilled Trades Ontario. For information on *Building Opportunities in the Skilled Trades Act, 2021 (BOSTA)* and its regulations, please visit [Building Opportunities in the Skilled Trades Act, 2021, S.O. 2021, c. 28 - Bill 288 \(ontario.ca\)](http://www.skilledtradesontario.ca/building-opportunities-in-the-skilled-trades-act-2021-s.o.-2021-c.-28-bill-288)

Pre-requisites

In order to advance to Level 2 of the apprenticeship program, an individual must have completed all of the units outlined in Level 1. Similarly, in order to advance to Level 3 of the program, an individual must have completed all of the units outlined in Level 1 and 2.

Hours Disclaimer (if applicable)

It is agreed that Training Delivery Agents (TDAs) may need to make slight adjustments (with cause) according to particular apprentice needs and may deviate from the unit sequencing and the prescribed practical and theoretical hours shown within the standard. However, all TDAs will comply with the hours at the reportable subject level.

Personal and Safety Equipment: Personal protective equipment is at the discretion of the TDA who must conform to Ontario Provincial Health and Safety Regulations.

Please note that all practices described in this standard must be performed according to the appropriate Trade and industry best practice.

Reportable Subject Summary-Level 3

Number	Reportable Subjects	Hours Total	Hours Theory	Hours Practical
S0932	Fluid Power Systems III	48	39	9
S0933	Steamfitting Systems III	120	96	24
S0934	Trade Documentation III	48	18	30
S0935	Welding III	24	15	9
	Total	240	168	72

Number:	S0932		
Title:	Fluid Power Systems		
Duration:	Total 48 hours	Theory 39 hours	Practical 9 hours
Prerequisites:	Level II		
Content:	Pneumatic Systems		
	S0932.1	Pneumatic System Safety	
	S0932.2	Pneumatic System Types	
	S0932.3	Pneumatic System Components	
	S0932.4	Pneumatic System Drawings	
	S0932.5	Pneumatic System Controls	
	S0932.6	Pneumatic System Commissioning	
	Hydraulic Systems		
	S0932.7	Hydraulic System Principles	
	S0932.8	Hydraulic Oils	
	S0932.9	Hydraulic Reservoirs	
	S0932.10	Hydraulic Oil Filters	
	S0932.11	Hydraulic Cylinders	
	S0932.12	Hydraulic Pumps	
	S0932.13	Hydraulic Valves and Controls	
	S0932.14	Hydraulic Piping Supports	
	S0932.14	Hydraulic System Drawings	
	S0932.16	Hydraulic System Commissioning	
	Robotics		
	S0932.17	Programmable Logic Controllers	

Evaluation & Testing: Assignments related to theory and appropriate application skills.
Minimum of one mid-term test during the 8-week term.
Final exam at end of term.
Periodic quizzes.

Steamfitter – Level 3

Instructional and Delivery Strategies:	Use of material samples and manufacturers' specifications (CDs, manuals, internet, computers, satellite)
Reference Materials:	IPT Pipe trades Handbook IPT Industrial Hydraulics Handbook Alberta steamfitting modules
Recommended Equipment List:	air compressor pump reservoirs cylinders actuator hoses relief valves gauges stauff clamps tubing wrenches allen keys (imperial/metric) pneumatic valves hydraulic valves pneumatically controlled valves for heating and cooling dryer regulator set filter oiler sets intensifiers pneumatic tools pneumatic controller (heating and cooling boards)

Number: S0932.1

Title: **Pneumatic System Safety**

Duration: Total 0.5 hour Theory 0.5 hours Practical 0 hours

Cross-Reference to Training Standard: 5470.0, 5472.0, 5473.0, 5474.0, 5476.0, 5477.0, 5478.0, 5479.0, 5480.0, 5481.0, 5483.0 5484.0

General Learning Outcomes

Upon successful completion the apprentice is able to identify and state the safety precautions used when working with or in the vicinity of compressed air.

Learning Outcomes and Content

- 1.1 Identify the correct behaviour when working with compressed air in order to avoid hazards
- 1.2 Determine and apply the correct methods of practising compressed air safety

Number: S0932.2

Title: **Pneumatic System Types**

Duration: Total 1.5 hours Theory 1.5 hours Practical 0 hours

Cross-Reference to Training Standard: 5470.0, 5472.0, 5473.0, 5474.0, 5476.0, 5477.0, 5478.0, 5479.0, 5480.0, 5481.0, 5483.0 5484.0

General Learning Outcomes

Upon successful completion the apprentice is able to identify types of pneumatic systems.

Learning Outcomes and Content

2.1 Identify the following air systems:

- instrument air
- control air
- building automation
- ultra-pure air – lab air
- plant air
- robotics
- air driven tools
- conveyors
- paint shop air

Number: S0932.3

Title: **Pneumatic System Components**

Duration: Total 6 hours Theory 6 hours Practical 0 hours

Cross-Reference to Training Standard: 5470.0, 5472.0, 5473.0, 5474.0, 5476.0, 5477.0, 5478.0, 5479.0, 5480.0, 5481.0, 5483.0 5484.0

General Learning Outcomes

Upon successful completion the apprentice is able to identify types, use and applications of pneumatic system components.

Learning Outcomes and Content

3.1 Identify types of the following pneumatic system components:

- compressors
- motors
- mounting requirements
- pipes and fittings
- filters
- dryers
- oilers
- receivers
- valves
- cylinders
- pressure regulators
- gauges
- circuits
- intensifiers
- controllers and recorders
- sensors

3.2 Describe the function, applications and construction features of the following pneumatic components:

- compressors
- motors
- mounting requirements
- pipes and fittings
- filters
- dryers
- valves
- cylinders
- oilers

- pressure regulators
- manifold blocks
- gauges
- circuits
- controllers and recorders
- intensifiers
- sensors

3.3 Describe the installation procedures for pneumatic gauges

3.4 Determine the function and correct layout of pneumatic circuits

3.5 Identify the purpose and methods of adjusting controllers and recorders

3.6 Identify the purpose and use of pneumatic tools

Number: S0932.4

Title: **Pneumatic System Drawings**

Duration: Total 6 hours Theory 3 hours Practical 3 hours

Cross-Reference to Training Standard: 5470.0, 5472.0, 5473.0, 5474.0, 5476.0, 5477.0, 5478.0, 5479.0, 5480.0, 5481.0, 5483.0 5484.0

General Learning Outcomes

Upon successful completion the apprentice is able to read and draw pneumatic system drawings and sketches.

Learning Outcomes and Content

4.1 Identify pneumatic systems

4.2 Draw the following pneumatic system component symbols:

- air intake filters
- compressors
- receivers
- regulators
- lubricators
- valves
- cylinders
- motors
- oscillators
- blowers
- transmission lines

4.3 Read and interpret pneumatic system drawings and sketches

4.4 Sketch and label an isometric drawing of a five-station plant air circuit with:

- a reciprocating multi-cylinder air compressor
- filter
- dryer
- valves
- oilers
- pressure regulator
- pressure relief valve
- manifold block
- gauges
- pipes and fittings including a start-up bypass

Number: S0932.5

Title: **Pneumatic System Controls**

Duration: Total 6 hours Theory 3 hours Practical 3 hours

Cross-Reference to Training Standard: 5470.0, 5472.0, 5473.0, 5474.0, 5476.0, 5477.0, 5478.0, 5479.0, 5480.0, 5481.0, 5483.0 5484.0

General Learning Outcomes

Upon successful completion the apprentice is able to read and sketch pneumatic control systems.

Learning Outcomes and Content

- 5.1 Define the abbreviation “LOC”
- 5.2 Sketch steam control valves
- 5.3 Identify the sequencing of pneumatic controls
- 5.4 Describe humidity control features
- 5.5 Describe zone control features
- 5.6 Describe indoor and outdoor control features
- 5.7 Describe digital controls for electronic and computer systems
- 5.8 Build and test a number of projects using various pneumatic valves and tubing

Number: S0932.6

Title: **Pneumatic System Commissioning**

Duration: Total 0.5 hours Theory 0.5 hours Practical 0 hours

Cross-Reference to Training Standard: 5470.0, 5472.0, 5473.0, 5474.0, 5476.0, 5477.0, 5478.0, 5479.0, 5480.0, 5481.0, 5483.0 5484.0

General Learning Outcomes

Upon successful completion the apprentice is able to describe pneumatic system commissioning procedures.

Learning Outcomes and Content

6.1 Define the following commissioning procedures:

- testing
- start-up
- balance, set up and adjust equipment

Number: S0932.7

Title: **Hydraulic Systems Principles**

Duration: Total 3 hours Theory 3 hours Practical 0 hours

Cross-Reference to Training Standard: 5470.0, 5472.0, 5473.0, 5474.0, 5476.0, 5477.0, 5478.0, 5479.0, 5480.0, 5481.0, 5483.0 5484.0

General Learning Outcomes

Upon successful completion the apprentice is able to describe hydraulic systems principles.

Learning Outcomes and Content

7.1 Define the fundamentals of hydraulic systems principles:

7.2 Define the properties of hydraulic fluids:

- viscosity
- fire resistance
- lubricity
- contamination from foreign particles, air and water

7.3 Define basic principles for force, work and power

- weight and specific gravity
- pressure and force
- static pressure
- gauge pressures in English and Metric units
- Pascal's Law
- conversion of energy and hydraulic power
- pressure losses

7.4 Identify hydraulic system types

- open system
- closed system

Number: S0932.8

Title: Hydraulic Oils

Duration: Total 1 hour Theory 1 hour Practical 0 hours

Cross-Reference to Training Standard: 5470.0, 5472.0, 5473.0, 5474.0, 5476.0, 5477.0, 5478.0, 5479.0, 5480.0, 5481.0, 5483.0 5484.0

General Learning Outcomes

Upon successful completion the apprentice is able to identify the different types, purpose and characteristics of hydraulic oils.

Learning Outcomes and Content

- 8.1 Identify types of hydraulic oils
- 8.2 State the requirements of hydraulic oils
- 8.3 Identify the types, purpose and interrelation of standard tests
- 8.4 Identify the types and application of fire-resistant fluids

Number: S0932.9

Title: **Hydraulic Reservoirs**

Duration: Total 1 hour Theory 1 hour Practical 0 hours

Cross-Reference to Training Standard: 5470.0, 5472.0, 5473.0, 5474.0, 5476.0, 5477.0, 5478.0, 5479.0, 5480.0, 5481.0, 5483.0 5484.0

General Learning Outcomes

Upon successful completion the apprentice is able to identify and state the function of fluid reservoirs.

Learning Outcomes and Content

9.1 Identify types, state purpose and function of fluid reservoirs:

- filling system with fluid
- heat dissipation
- sump for settling foreign matter
- breather for vapours
- surge and make up for system
- level indication

Number: S0932.10

Title: Hydraulic Oil Filters

Duration: Total 2 hours Theory 2 hours Practical 0 hours

Cross-Reference to Training Standard: 5470.0, 5472.0, 5473.0, 5474.0, 5476.0, 5477.0, 5478.0, 5479.0, 5480.0, 5481.0, 5483.0 5484.0

General Learning Outcomes

Upon successful completion the apprentice is able to identify the types, purpose and application of filters, metal screens, magnets and absorbents.

Learning Outcomes and Content

10.1 Identify the types, purpose and application of filters:

- metal screen filters
- adsorbent filters
- bypass filters
- full flow filters
- dual filters

10.2 Describe the construction features of filters:

- describe filter materials used in adsorbent filters
- describe filter housing and passages

10.3 Explain the operation of filters:

- determine full flow and proportional flow application
- filter restrictions
- define “micron”
- by-pass or dual filter for continuous operation
- determine correct direction of flow

10.4 Determine location and mounting of filters

10.5 Determine accessibility of equipment for servicing

10.6 State filter maintenance requirements

10.7 State importance of routine inspection

10.8 Describe method of inspection

Number:	S0935.11		
Title:	Hydraulic Cylinders		
Duration:	Total 3 hours	Theory 3 hours	Practical 0 hours
Cross-Reference to Training Standard:	5470.0, 5472.0, 5473.0, 5474.0, 5476.0, 5477.0, 5478.0, 5479.0, 5480.0, 5481.0, 5483.0 5484.0		

General Learning Outcomes

Upon successful completion the apprentice is able to identify hydraulic cylinders and related components.

Learning Outcomes and Content

11.1 Identify types, purpose, and applications of:

- packing and seals
- air bleeds
- cushions
- rotary actuators
- cushions
- motors
- pumps
- boosters
- accumulators

11.2 Describe method of installing actuators

11.3 Describe procedure for connecting to load

11.4 Determine installing and mounting procedures

11.5 State importance of regular charging

11.6 State importance of relieving gas and liquid

11.7 Identify method of checking seal in piston accumulators using gas pressure and gauge

11.8 State importance of checking level of liquid in air bottle type accumulators

11.9 Indicate techniques of replacing accumulator parts

11.10 State importance of using nitrogen above 1000 PSI with non-fire resistance fluids

Number: S0932.12

Title: Hydraulic Pumps

Duration: Total 2 hours Theory 2 hours Practical 0 hours

Cross-Reference to Training Standard: 5470.0, 5472.0, 5473.0, 5474.0, 5476.0, 5477.0, 5478.0, 5479.0, 5480.0, 5481.0, 5483.0 5484.0

General Learning Outcomes

Upon successful completion the apprentice is able to describe the construction and operation of hydraulic system pumps.

Learning Outcomes and Content

- 12.1 Define the classification and function of hydraulic system pumps:
- identify the class of service
 - single stage
 - multi stage
- 12.2 Identify types of pumps and impellers:
- gear
 - vane
 - screw
 - centrifugal
- 12.3 Identify pump drives:
- shaft position
 - electric motors
 - couplings
- 12.4 Describe the construction features of hydraulic system pumps:
- construction materials
 - mountings
- 12.5 Explain the operating procedures of hydraulic system pumps:
- starting procedures
 - low and high pressure areas
- 12.6 Describe the techniques to analyze abnormal conditions:
- low pressures
 - high pressures
 - low flow rates
 - overheating
 - rapid wear

Number: S0932.13

Title: **Hydraulic Valves and Controls**

Duration: Total 3 hours Theory 3 hours Practical 0 hours

Cross-Reference to Training Standard: 5470.0, 5472.0, 5473.0, 5474.0, 5476.0, 5477.0, 5478.0, 5479.0, 5480.0, 5481.0, 5483.0 5484.0

General Learning Outcomes

Upon successful completion the apprentice is able to identify the types and purposes of hydraulic valves and controls.

Learning Outcomes and Content

- 13.1 Identify the types, purposes and applications of the following:
- directional control valves
 - pressure control valves
 - flow control valves
 - servo-valves
 - pressure switches
 - gauges
- 13.2 Describe the construction features of the following:
- directional control valves
 - pressure control valves
 - flow control valves
 - servo-valves
 - pressure switches
 - gauges
- 13.3 Explain the operating procedures of following:
- directional control valves
 - pressure control valves
 - flow control valves
 - servo-valves
 - pressure switches
 - gauges
 - methods of actuating valves
- 13.4 Identify methods of installing valves and controls
- 13.5 Identify the effects of using panel or flange mounting on removal of valves

Number: S0932.14

Title: **Hydraulic Piping Supports**

Duration: Total 3 hours Theory 3 hours Practical 0 hours

Cross-Reference to Training Standard: 5470.0, 5472.0, 5473.0, 5474.0, 5476.0, 5477.0, 5478.0, 5479.0, 5480.0, 5481.0, 5483.0 5484.0

General Learning Outcomes

Upon successful completion the apprentice is able to identify the types, purpose and application of hydraulic piping brackets and supports.

Learning Outcomes and Content

14.1 Identify the types and purpose of piping:

- brackets
- supports
- anchors

14.2 Identify the application of piping:

- brackets
- supports
- anchors

14.3 Describe hydraulic brackets, supports and anchor installations

Number: S0932.15

Title: **Hydraulic System Drawings**

Duration: Total 6 hours Theory 3 hours Practical 3 hours

Cross-Reference to Training Standard: 5470.0, 5472.0, 5473.0, 5474.0, 5476.0, 5477.0, 5478.0, 5479.0, 5480.0, 5481.0, 5483.0 5484.0

General Learning Outcomes

Upon successful completion the apprentice is able to read and sketch hydraulic system drawings.

Learning Outcomes and Content

- 15.1 Identify the specified types of hydraulic system diagrams and their contents, as applicable, with respect to:
- flow lines
 - abbreviations
 - specifications
 - terminology
 - standards
 - capacities
 - pressures
 - system classifications
 - sequence of component installation
 - operating principles of components
 - circuit function
 - applications and limitations
- 15.2 Determine and apply the correct methods of reading and interpreting hydraulic system diagrams and sketches
- 15.3 Identify and interpret the specified hydraulic system component symbols in terms of:
- symbol characteristics
 - types of lines
 - functions of components
 - joining procedures with the system
 - direction of flow
 - operating sequence
 - types of controls
- 15.4 State the value of freehand sketching hydraulic circuits

15.5 State principles behind sketching hydraulic system component symbols

15.6 Sketch and label a hydraulic circuit consisting of the following components:

- hoses
- connections
- reservoirs
- strainers
- pumps
- filters
- valves
- actuators
- cylinders
- accumulators
- heat exchangers
- intensifiers
- motors

Number: S0932.16

Title: **Hydraulic System Commissioning**

Duration: Total 0.5 hours Theory 0.5 hours Practical 0 hours

Cross-Reference to Training Standard: 5470.0, 5472.0, 5473.0, 5474.0, 5476.0, 5477.0, 5478.0, 5479.0, 5480.0, 5481.0, 5483.0 5484.0

General Learning Outcomes

Upon successful completion the apprentice is able to describe hydraulic system commissioning procedures.

Learning Outcomes and Content

- 16.1 Describe hydraulic system testing procedures
- 16.2 Describe hydraulic system flushing procedures
- 16.3 Describe hydraulic system commissioning procedures

Steamfitter – Level 3

Number:	S0932.17		
Title:	Programmable Logic Controllers		
Duration:	Total 3 hours	Theory 3 hours	Practical 0 hours
Cross-Reference to Training Standard:	5470.0, 5472.0, 5473.0, 5474.0, 5476.0, 5477.0, 5478.0, 5479.0, 5480.0, 5481.0, 5483.0 5484.0		

General Learning Outcomes

Upon successful completion the apprentice is able to describe the function of Programmable Logic Controllers.

Learning Outcomes and Content

- 17.1 Describe the operation of Programmable Logic Controllers (PLC)
- 17.2 Describe the methods of PLC communication:
 - parallel
 - serial
 - protocol establishment
- 17.3 Name PLC applications
- 17.4 Describe system requirements of PLC devices
- 17.5 Describe the advantages of using PLC devices
- 17.6 Describe the disadvantages of using PLC devices
- 17.7 Describe methods of troubleshooting PLC devices:
 - controller
 - input modules
 - output modules

Evaluation Structure		
Theory Testing	Practical Application Testing	Final Assessment
60%	10%	30%

Steamfitter – Level 3

Number: S0933

Title: Steamfitting Systems III

Duration: Total 120 hours Theory 96 hours Practical 24 hours

Prerequisites: Level II

Content:

S0933.1	Process Piping Systems
S0933.2	Medical Gas Systems
S0933.3	Sprinkler and Standpipe Installations
	Fuel Gas Systems
S0933.4	Fuel Gas Properties and Codes
S0933.5	Fuel Gas Meters and Regulators
S0933.6	Fuel Gas Piping Practices
S0933.7	Fuel Gas Pipe Sizing
S0933.8	Fuel Gas Combustion
S0933.9	Fuel Gas Venting
S0933.10	Fuel Gas Burners and Controls
S0933.11	Fuel Gas System Commissioning
	Hydronic Heating Systems
S0933.12	Building Heat Loss Calculations
S0933.13	Hydronic Heating System Design
	Refrigeration Systems
S0933.14	Principles of Refrigeration
S0933.15	Basic Refrigeration Cycle
S0933.16	Refrigeration System Components
S0933.17	Refrigeration System Commissioning
	Air Conditioning Systems
S0933.18	Principles of Air Conditioning
S0933.19	Psychometrics
S0933.20	Air Conditioning Applications
S0933.21	Air Conditioning System Components
S0933.22	Air Conditioning System Commissioning
	Heat Pump Systems
S0933.23	Heat Pump Principles and Applications
S0933.24	Solar Heat

Steamfitter – Level 3

Evaluation & Testing:	Assignments related to theory and appropriate application skills. Minimum of one mid-term test during the 8-week term. Final exam at end of term. Periodic quizzes.
Instructional and Delivery Strategies:	Use of material samples and manufacturers' specifications (CDs, manuals, internet)
Reference Materials:	Refrigeration & Air Conditioning Technology (Whifman/Johnson/Tomczyk) Gas Code B149 Med Gas Code Book BPV Act IPT Pipetrades Handbook CSA B149 Handbook
Recommended Equipment List:	display panels testing equipment purge burner regulators manometers meter bunsen burner conversion burner fire hose cabinets and valve display valves siamese connection (fabricate in shop) cutting torch and welding machine oxyacetylene torch and turbo-torch, b tank grinders medical gas display c/w outlets, zone valve box, alarm gas supply boiler gas fired unit heater gas fired radiant heater gas fired bvent venting system test pump hydrostatic

Number: S0933.1

Title: **Process Piping Systems**

Duration: Total 3 hours Theory 2 hours Practical 1 hour

Cross-Reference to Training Standard: 5470.0, 5472.0, 5473.0, 5475.0, 5476.0, 5477.0, 5478.0, 5479.0, 5480.0, 5484.0

General Learning Outcomes

Upon successful completion the apprentice is able to identify and explain a variety of process piping systems.

Learning Outcomes and Content

- 1.1 Define a “process piping system” and state its purpose
- 1.2 Describe the difference between a process piping system and a plumbing system
- 1.3 Identify industries where process-piping systems are installed
- 1.4 Identify some common process piping systems including:
 - compressed air
 - chemical supply piping
 - high purity water supply piping
 - food process piping
 - irrigation piping
 - brewery piping
 - oil refineries
- 1.5 Identify different acts, regulations and specifications used to estimate, plan, install, inspect and commission a variety of process piping systems
- 1.6 Identify the authorities having jurisdiction for process piping systems including:
 - owners
 - owner representatives
 - engineers
 - health inspectors
 - municipal inspectors
- 1.7 Research and report on at least five process piping systems including details such as:
 - type
 - purpose
 - enforcing authority
 - any special training, certificates or licenses required for installation
 - types of pipe, valves, fittings and joining methods that may be used to install
 - support, testing and commissioning requirements
 - specification, code or act used

Number: S0933.2

Title: **Medical Gas Systems**

Duration: Total 3 hours Theory 2 hours Practical 1 hour

Cross-Reference to Training Standard: 5470.0, 5472.0, 5473.0, 5475.0, 5476.0, 5477.0, 5478.0, 5479.0, 5480.0, 5484.0

General Learning Outcomes

Upon successful completion the apprentice is able to identify and describe the types of medical gas systems, standards and acceptable materials, installation, identification, commissioning and reporting procedures in accordance with government safety regulations, manufacturers' recommendations and approved industry standards.

Learning Outcomes and Content

- 2.1 Define the purpose of medical gas systems
- 2.2 Identify the standards governing the design and installation of medical gas systems
- 2.3 List gases covered by the standards
- 2.4 List the type and grade of piping acceptable for medical gas systems
- 2.5 Specify the minimum size of acceptable piping
- 2.6 Describe how medical gas piping must be identified
- 2.7 Describe the installation procedures for medical gas systems
- 2.8 State where valves are required in medical gas systems
- 2.9 Identify the acceptable methods of joining pipe and fittings
- 2.10 Specify the welding, brazing or silver soldering qualification requirements
- 2.11 Identify typical applications for silver soldering
- 2.12 Identify the TSSA standards for silver soldering
- 2.13 Specify the spacing of hangers or supports for various sizes of pipe for medical gas systems
- 2.14 Describe the testing procedures required by standards
- 2.15 Fill out the report forms required by standards
- 2.16 Draw a schematic for each of the following systems:
 - oxygen
 - medical air
 - vacuum

Number: S0933.3

Title: **Sprinkler and Standpipe Installations**

Duration: Total 12 hours Theory 10 hours Practical 2 hours

Cross-Reference to Training Standard: 5470.0, 5472.0, 5473.0, 5475.0, 5476.0, 5477.0, 5478.0, 5479.0, 5480.0, 5484.0

General Learning Outcomes

Upon successful completion the apprentice is able to identify and explain sprinkler and standpipe installation requirements to comply with the NFPA standards

Learning Outcomes and Content

- 3.1 List the three general classes of service for standpipe and hose systems for the extinguishing of fire and the intended use for each
- 3.2 Describe the design features of the four basic types of standpipe and hose systems
- 3.3 Explain the relative efficiency of the standpipe and hose system when compared to other types of fire protection
- 3.4 Describe a “combined” system
- 3.5 State the purpose of a sprinkler system
- 3.6 Name and describe the two main types of sprinkler systems
- 3.7 State the purpose of a dry pipe valve
- 3.8 State the purpose of a wet pipe valve
- 3.9 Explain what “UL approved” or “UL Certified” means
- 3.10 Identify the “NFPA” standard which covers installation of sprinkler systems
- 3.11 State the regulations pertaining to zone heights exceeding the normal maximum
- 3.12 Specify the minimum size for standpipes not exceeding 100 feet in height
- 3.13 Specify the minimum size for standpipes over 100 feet in height
- 3.14 Specify the normal maximum height for a standpipe
- 3.15 Specify the required size and capacity of standpipes for a class II service
- 3.16 List all factors governing the number and arrangement of standpipe equipment
- 3.17 List all factors governing the number class I, II and III services in a building

- 3.18 State all the requirements pertaining to the location of standpipes being built within 60 feet of exposed buildings
- 3.19 Name two common types of alarms used on sprinkler systems
- 3.20 Describe the construction features and application of sprinkler and standpipe installations
- 3.21 Specify the minimum standpipe size where 2½-inch hose outlets are provided on a combined system
- 3.22 Draw and label an elevation view of a typical single-zone system
- 3.23 Draw and label an elevation view of a typical two-zone system where pumps are on the same level, and indicate minimum sizes for the supply piping
- 3.24 Identify the pump requirements per zone
- 3.25 Draw and label an elevation drawing of a two-zone system
- 3.26 State all requirements pertaining to the protection and concealment of standpipes
- 3.27 List all requirements pertaining to each hose valve for linen hose used on a wet system
- 3.28 Specify the threads for the hose connections at each hose valve
- 3.29 List all the requirements pertaining to shut-off nozzles
- 3.30 List all factors governing the water supply requirements for standpipe systems
- 3.31 Describe the purpose of indicator post valves
- 3.32 Specify the types of pipe that may be installed in standpipe and hose systems
- 3.33 Specify the type of fittings that may be used on standpipe and hose systems
- 3.34 Specify the type of pressure gauge to be used on standpipe and hose systems
- 3.35 Draw and label the complete trim piping for a wet pipe valve
- 3.36 Draw and label the complete trim piping for a dry pipe valve
- 3.37 State where an antifreeze system is required to be installed
- 3.38 Describe how to hook an antifreeze system into an existing system
- 3.39 Specify the type of valves to be installed on the connections to each water supply
- 3.40 Specify the type of valves to be installed on risers that utilize a common water supply

- 3.41 Explain the operating principles of sprinkler and standpipe installations
- 3.42 Describe the operation of the four basic types of standpipe and hose systems
- 3.43 Explain the operation of a dry pipe valve
- 3.44 Explain the operation of a wet pipe valve
- 3.45 Specify the recommended pressure at a small hose outlet
- 3.46 Specify the minimum supply rates and pressures for class I, II and III services
Describe a fire department connection
- 3.47 List ten requirements pertaining to fire department connections
- 3.48 State all the requirements pertaining to the connection of gravity or pressure tanks on the top floor or roof of a building to a standpipe system
- 3.49 Specify the minimum flow for a standpipe for a class I or II service
- 3.50 Specify the minimum flow where there is more than one standpipe
- 3.51 Explain why an excess pressure pump is used
- 3.52 Describe the difference between a pendant and upright sprinkler head
- 3.53 Explain what is meant by a sidewall sprinkler head
- 3.54 Explain what is meant by a deluge system
- 3.55 Explain what is meant by a fusible link in a sprinkler head
- 3.56 List the temperature and colour coding for sprinkler heads
- 3.57 Describe a frangible bulb sprinkler head
- 3.58 State the usual standard minimum water pressure required at the highest sprinkler on the system
- 3.59 Describe the function of a flow indicator in a sprinkler system
- 3.60 Describe the operation of a water gong
- 3.61 Describe a pre-action system
- 3.62 Describe the operation of a foam system
- 3.63 State where a foam system would be used
- 3.64 State where a carbon dioxide system would be used
- 3.65 Describe the testing procedures for sprinkler and standpipe installations

- 3.66 Specify all the hydrostatic test requirements for standpipe and hose systems
- 3.67 State the recommended maximum interval between tests for dry pipe systems
- 3.68 Describe the suggested pressure test for systems that have been out of service for a number of years
- 3.69 State the normal hydrostatic pressure used for testing new sprinkler systems
- 3.70 Describe the recommended location and installation requirements of sprinkler and standpipe installations
- 3.71 Identify the location of the following components:
- standpipes in buildings with numerous partitions
 - standpipes in buildings having large open areas
 - indicator valves
 - hose valves
 - hose outlets for class I, II and III services
 - indicator post valves
 - pressure gauges in standpipe and hose systems
- 3.72 Identify the location of pressure gauges in standpipe and hose systems
- 3.73 State all the installation requirements pertaining to water flow alarms
- 3.74 Identify the location of hose valves in buildings under construction
- 3.75 Specify the maximum height for hose outlets identify the location of hose stations
- 3.76 Specify the clearance of the hose valve within a fire hose cabinet
- 3.77 Specify the number of 2 ½-inch hose outlets allowed where a standpipe system is supplied by a fire pump
- 3.78 Specify the maximum length of 1½-inch fire hose for class II and III services
- 3.79 Specify the minimum water supply for a combined system for a light-hazard high-rise building that is fully protected by sprinklers
- 3.80 State all the requirements pertaining to hose racks for 1 ½-inch hose
- 3.81 State all the factors governing the size of a standpipe for a given installation
- 3.82 State all the requirements pertaining to the connection of gravity or pressure tanks to a common riser
- 3.83 State all the requirements pertaining to the installation of two or more standpipes in the same building or section of a building
- 3.84 State all the installation requirements pertaining to water flow alarms

- 3.85 Describe the recommended procedure when a system is to be out of service
- 3.86 State all the requirements pertaining to standpipe installations in buildings under construction that are over 100 feet in height
- 3.87 State all the requirements pertaining to the vertical support of standpipes in buildings under construction
- 3.88 State all the requirements pertaining to the installation of fire department connections in buildings under construction
- 3.89 Identify the location of the uppermost hose connection during construction and the requirements pertaining to this connection
- 3.90 State the length of time for which a temporary standpipe must remain in service
Identify the location of signs indicating fire department connections
- 3.91 Explain the circumstances in which a telephone system should be installed in conjunction with the standpipe system
- 3.92 State the pipe size commonly used on most standard sprinkler heads
- 3.93 List how many sprinkler heads can be installed in one area on extra hazard occupancy on a given number of pipe sizes
- 3.94 State how many sprinkler heads can be installed in one area of ordinary hazard occupancy on a given number of pipe sizes
- 3.95 Specify the smallest permissible size of flushing connection
- 3.96 Draw, label and size a dry pipe sprinkler system for three types of hazard areas given relevant information for sprinkler and standpipe installation
- 3.97 Draw, label and size a wet pipe sprinkler system for three types of hazard areas given relevant information for sprinkler and standpipe installation
- 3.98 Draw, label and size an antifreeze sprinkler system for three types of hazard areas given relevant information for sprinkler and standpipe installation

Number: S0933.4

Title: **Fuel Gas Properties and Codes**

Duration: Total 3 hours Theory 3 hours Practical 0 hours

Cross-Reference to Training Standard: 5470.0, 5472.0, 5473.0, 5475.0, 5476.0, 5477.0, 5478.0, 5479.0, 5480.0, 5484.0

General Learning Outcome

Upon successful completion the apprentice is able to identify and describe the properties of natural gas and the code requirements for fuel gas.

Learning Outcomes and Content

- 4.1 Define the types of natural fuel gasses
- 4.2 State the origin of natural gas
- 4.3 Name the family of chemicals to which natural gas belongs
- 4.4 Explain why the properties of natural gas can be regarded as those of methane gas
- 4.5 List four constituents of natural gas
- 4.6 State the two reasons for removing sulphur compounds from natural gas
- 4.7 State the ignition temperature for natural gas
- 4.8 Identify the flame temperature for natural gas
- 4.9 Explain the heat value of natural gas during complete combustion
- 4.10 State the upper and lower percentage limits of inflammability for natural gas in the gas/air mixture necessary to support combustion
- 4.11 Name the result and products of complete combustion of a natural gas flame
- 4.12 Name the product used to give natural gas a distinct odour
- 4.13 State the specific gravity of natural gas when air is given a specific gravity of 1
- 4.14 State if natural gas is heavier or lighter than air per the same volume
- 4.15 Define the following terms as they apply to fuel gas systems:
 - absolute pressure
 - gauge pressure
 - static pressure
 - working pressure
 - flow pressure
 - high pressure
- 4.16 Explain the algebraic equation of the Charles and Boyles Combined Gas Law
- 4.17 Calculate the different pressure and volumes of natural gas

- 4.18 Identify the Imperial and metric units of measurement used for the flow rate of natural gas
- 4.19 List factors that affect the pressure drop or measurement of the resistance to flow when gas flows through piping
- 4.20 Convert water column to equivalent PSI
- 4.21 Calculate the pressure in ounces per square inch equivalent PSI
- 4.22 Describe the testing information for fuel gas systems
- 4.23 Name the two basic instruments used by the gas industry to measure pressure
- 4.24 Describe how pressure is measured by a water-filled manometer
- 4.25 Measure pressure with a water filled manometer
- 4.26 List approved testing agencies whose certification marks and ratings are nationally recognized
- 4.27 Explain the role of the TSSA in Ontario
- 4.28 Define the code regulations for fuel gas installations
- 4.29 State the regulation by which all gas installations are governed

Number: S0933.5

Title: Fuel Gas Meters and Regulators

Duration: Total 3 hours Theory 2 hours Practical 1 hour

Cross-Reference to Training Standard: 5470.0, 5472.0, 5473.0, 5475.0, 5476.0, 5477.0, 5478.0, 5479.0, 5480.0, 5484.0

General Learning Outcomes

Upon successful completion the apprentice is able to identify types and functions of fuel gas meters and regulators.

Learning Outcomes and Content

- 5.1 State the main purpose of a gas meter
- 5.2 Describe the two main types of gas meters
- 5.3 State the main purpose for which rotary type gas meters are used
- 5.4 State the three types of dials found on the bellows-type gas meter
- 5.5 State the purpose of consumption dials in bellows-type gas meters
- 5.6 State the main purpose of a gas pressure regulator
- 5.7 State the purpose of the vent in the regulator body above the diaphragm
- 5.8 Identify the two basic types of regulators used in gas fittings
- 5.9 Describe the construction features and function of gas meters and regulators
- 5.10 State the number of consumption dials to be found on residential (domestic) bellows type meters
- 5.11 State the number of cubic feet recorded by each consumption dial of a residential (domestic) bellows-type gas meter
- 5.12 State the number of cubic feet indicated by one revolution of the indicating dial
- 5.13 State the three different cubic measurements that can be recorded by one revolution of the test dial for residential (domestic) meters
- 5.14 State the number of divisions in one revolution of a consumption dial
- 5.15 Describe how the small rotary gas meter is supported
- 5.16 Identify in which direction the impellers of a rotary gas meter rotate
- 5.17 Describe how allowances may be made for variations in temperature and volume of gas flowing through the meter
- 5.18 State the three main components of a gas pressure regulator
- 5.19 Identify in which direction the spring adjusting screw must be turned to increase pressure downstream from the regulator

- 5.20 State the terminating point of the vent piping from the regulator
- 5.21 Name the three factors to be considered when selecting gas pressure regulators
- 5.22 Identify the consumption reading from a given illustration of metering dials
- 5.23 Draw and label a single-line illustration of the service line connected to a bellows-type meter, correctly locating a shut-off valve and a pressure regulator
- 5.24 Draw and label an illustration of a regulator, indicating the loading element, measuring and restricting element

Number: S0933.6

Title: **Fuel Gas Piping Practices**

Duration: Total 5 hours Theory 4 hours Practical 1 hour

Cross-Reference to Training Standard: 5470.0, 5472.0, 5473.0, 5475.0, 5476.0, 5477.0, 5478.0, 5479.0, 5480.0, 5484.0

General Learning Outcomes

Upon successful completion the apprentice is able to identify and explain the application for gas pipe practices.

Learning Outcomes and Content

- 6.1 List the pressure categories for gas mains
- 6.2 Define the term “gas service line”
- 6.3 Define the term “branch line”
- 6.4 Name who is responsible for gas piping upstream from the gas meter
- 6.5 State the reason for reaming gas piping
- 6.6 State the recommendations for gas piping installed in a location where condensation is likely to occur
- 6.7 Describe the application and installation practices of gas piping and fittings
- 6.8 State the minimum requirements for the installation of a pipe drip or dirt pocket
- 6.9 Identify the piping materials that are permitted in gas fitting
- 6.10 Identify the size of gas piping that must be welded
- 6.11 State the requirement for the use of fabricated welded branch connections
- 6.12 State the requirement for the use of pipe dope or equivalent material
- 6.13 Name the material used for gaskets in natural gas piping
- 6.14 Describe piping practices that are not recommended for gas systems
- 6.15 State the prohibited areas for the location of gas piping in a building
- 6.16 State the requirements for a piping outlet that is not connected to an appliance or piece of equipment when the pressure is at or below 14 inches of water column
- 6.17 State the requirements for a piping outlet that is not connected to an appliance or piece of equipment when the pressure is in excess of 14 inches of water column

- 6.18 State the minimum measurement for an un-threaded portion of steel pipe extended through a finished ceiling
- 6.19 State the minimum measurement for an un-threaded portion of steel pipe extended through the floor
- 6.20 State the requirements of gas piping that runs from one building to another
- 6.21 State the types of materials that shall not be used as gasket material
- 6.22 State the size of opening required at the top of vertical pipe chases
- 6.23 State the requirement pertaining to screwed joints underground
- 6.24 State the identification requirements for gas piping
- 6.25 State the type of copper pipe or tube that can be used to convey natural gas above ground
- 6.26 Describe how copper tube can be joined below ground
- 6.27 Describe where plastic pipe can be used to convey natural gas
- 6.28 Describe how piping joints can be made in plastic pipe used for natural gas
- 6.29 State the length requirement for hose connecting permanent installations
- 6.30 State the valve used as a shut-off valve
- 6.31 State the requirement for connecting an appliance by a flexible metal hose where the appliance is in a concealed location
- 6.32 State the maximum allowable pressure drop in the piping from the meter to the appliance where pressure is less than $\frac{1}{2}$ PSIG.
- 6.33 Calculate the minimum pipe size required (to the riser or drop) to supply a central appliance requiring 80,000 BTU/hr.
- 6.34 State the minimum pipe size that can be used indoors
- 6.35 Calculate the correct pipe sizes for a given piping layout
- 6.36 Draw and label an illustration of three branch lines taken off a supply line; one taken off the side, one taken off the top and the other taken off the bottom
- 6.37 Draw and label an illustration of a typical pipe drip

Number: S0933.7

Title: Fuel Gas Pipe Sizing

Duration: Total 2 hours Theory 2 hours Practical 0 hours

Cross-Reference to Training Standard: 5470.0, 5472.0, 5473.0, 5475.0, 5476.0, 5477.0, 5478.0, 5479.0, 5480.0, 5484.0

General Learning Outcomes

Upon successful completion the apprentice is able to size gas piping for multiple piping connections to gas fired equipment and appliances.

Learning Outcomes and Content

7.1 Define the following terms:

- low pressure
- intermediate pressure
- pressure loss (differential)
- manifold
- water column “WC”

7.2 Convert water column to ounces per square inch “WC to ozs/sq”

7.3 Explain how a water manometer is used to measure gas pressures

7.4 State the pressure loss allowable in gas piping

7.5 Convert BTU/hr to cubic feet/hr of gas

7.6 List the factors required to determine pipe sizing for multiple gas piping connections

7.7 Size the piping required for given piping drawings of multiple gas connections

Number: S0933.8

Title: **Fuel Gas Combustion**

Duration: Total 3 hours Theory 3 hours Practical 0 hours

Cross-Reference to Training Standard: 5470.0, 5472.0, 5473.0, 5475.0, 5476.0, 5477.0, 5478.0, 5479.0, 5480.0, 5484.0

General Learning Outcomes

Upon successful completion the apprentice is able to describe the fundamentals, types, and function of combustion and venting systems.

Learning Outcomes and Content

- 8.1 State the scientific definition of combustion
- 8.2 State the products of the complete combustion of natural gas
- 8.3 Identify the chemical formula involved in the complete combustion of natural gas
- 8.4 State the percentage of natural gas required at the burner for peak efficiency
- 8.5 Calculate the approximate amount of condensed water vapour resulting from the complete combustion of 1000 cubic feet of natural gas
- 8.6 Calculate the approximate amount of heat produced by the complete combustion of 1 cubic foot of natural gas
- 8.7 Name the two types of air used in the process of complete combustion
- 8.8 Calculate air required for a 100,000 BTU burner
- 8.9 Name the main product of incomplete combustion
- 8.10 List agencies that test new designs of appliances to ensure that carbon monoxide levels are kept extremely low
- 8.11 Identify the chemical that is also a product of incomplete combustion and has a sharp, distinct odour
- 8.12 State the purpose of venting a gas appliance
- 8.13 Describe the function of combustion and venting
- 8.14 Identify draft hoods or diverters
- 8.15 Identify gas flow resistance relating to pipe size and number of elbows
- 8.16 State the effect of introducing air to flue gases at the draft diverter

- 8.17 State the problems that may occur in a venting system
- 8.18 State the cause of condensation of water vapour within the venting system
- 8.19 List causes of condensation
- 8.20 State the requirements for combustion air
- 8.21 State the requirements for make up air
- 8.22 State the type of appliances that use draft diverters (hoods)
- 8.23 State the draft control size required for a 6-inch flue pipe
- 8.24 State the appliance types in relation to the venting

Number: S0933.9

Title: **Fuel Gas Venting**

Duration: Total 3 hours Theory 3 hours Practical 0 hours

Cross-Reference to Training Standard: 5470.0, 5472.0, 5473.0, 5475.0, 5476.0, 5477.0, 5478.0, 5479.0, 5480.0, 5484.0

General Learning Outcomes

Upon successful completion the apprentice is able to identify and specify venting requirements for fuel gas fired appliances and equipment.

Learning Outcomes and Content

- 9.1 List three types of vents used on gas appliances and describe the applications and limitations of each.
- 9.2 Explain the meaning of the following terms:
 - vent
 - chimney
 - flue
 - vent connector
- 9.3 Specify materials, clearances and code requirements for:
 - vents
 - chimneys
 - vent connectors
 - vent and chimney terminations
- 9.4 Size vents, vent connectors and chimneys from a given drawing, using the gas code

Number: S0933.10

Title: **Fuel Gas Burners and Controls**

Duration: Total 5 hours Theory 4 hours Practical 1 hour

Cross-Reference to Training Standard: 5470.0, 5472.0, 5473.0, 5475.0, 5476.0, 5477.0, 5478.0, 5479.0, 5480.0, 5484.0

General Learning Outcomes

Upon successful completion the apprentice is able to describe the fundamentals, types, applications, operation and recommended installation procedures of burners and controls.

Learning Outcomes and Content

- 10.1 Describe the fundamentals, types and application of fuel burner controls
- 10.2 Define the term “atmospheric burner”
- 10.3 Define a “bunsen flame”
- 10.4 Define a “luminous flame”
- 10.5 Name the two main types of burner ports
- 10.6 Name the two types of design for mono-port burners
- 10.7 Name the device usually used to distribute the heat evenly from the burner over the heating surface of the boiler
- 10.8 List the types of gas burner mixing systems
- 10.9 List the types of atmospheric gas burner port construction
- 10.10 State the type of flame safeguard feature usually used on domestic gas equipment
- 10.11 State the operating principle of the thermocouple
- 10.12 Identify the design of conversion burner used for a boiler previously fired by coal
- 10.13 Identify the types of pilot burners used on gas equipment
- 10.14 Define the term “millivolts”
- 10.15 State how millivolts are produced
- 10.16 Measure millivoltage on thermocouples and thermopiles
- 10.17 Describe the operating principles of burners and controls

- 10.18 State how the primary air to the burner can be regulated
- 10.19 State where secondary air is added to the burner
- 10.20 State the percentage of primary air that is premixed with gas in the atmospheric burner
- 10.21 State the method used to determine the size of the gas orifice
- 10.22 State how the rated BTU/hr. output for a burner can be obtained
- 10.23 State how a downdraft oil-burning furnace can be converted to a gas-fired furnace
- 10.24 State the length of thermocouple or thermopile that should be encompassed by the pilot flame to generate the required voltage
- 10.25 State the approximate number of volts produced by a single thermocouple
- 10.26 State the range of volts usually produced by a thermopile
- 10.27 State why the pilotstat will not initially open when the thermocouple is energized
- 10.28 State which flame is protected by a non-100%-protected automatic pilot system
- 10.29 State the protection given by a 100%-protected automatic pilot system
- 10.30 State the functions performed by the pilot burner assembly
- 10.31 Describe the recommended installation procedures for burners and controls
- 10.32 Draw and label an illustration of a typical atmospheric burner
- 10.33 Draw and label an illustration of a single thermocouple connected to a sensitive millivolt meter
- 10.34 Draw and label an illustration of a simple thermopile
- 10.35 Sketch a wiring diagram that uses a self-energizing system connecting the following:
 - pilotstat
 - main gas valve
 - thermostat
 - high limit control
- 10.36 Describe the diagnostic procedures for burner flames
- 10.37 State the causes of a lazy yellow pilot flame
- 10.38 State the causes of a waving blue pilot flame
- 10.39 State the causes of a small blue pilot flame

Number: S0933.11

Title: Fuel Gas System Commissioning

Duration: Total 1 hour Theory 1 hour Practical 0 hours

Cross-Reference to Training Standard: 5470.0, 5472.0, 5473.0, 5475.0, 5476.0, 5477.0, 5478.0, 5479.0, 5480.0, 5484.0

General Learning Outcomes

Upon successful completion the apprentice is able to state and apply the procedures for commissioning a fuel gas system.

Learning Outcomes and Content

- 11.1 State the testing pressure and the duration of the test for a given fuel gas piping system
- 11.2 State the tests required for newly installed gas piping before and after the appliances have been installed
- 11.3 Identify two substances that should not be used to pressure test gas piping systems
- 11.4 Identify the gases commonly used to pressure test gas piping systems
- 11.5 Describe the final testing procedure before the gas system becomes operational
- 11.6 List methods of purging a gas piping system to the outdoors
- 11.7 Describe the procedure to be followed when gas piping of 4-inch N.P.S. or larger has been pressure tested with air
- 11.8 State the safety precautions that must be taken when purging gas piping
- 11.9 State the maximum increments used in calibrating pressure testing devices on gas piping before appliances are connected
- 11.10 State the maximum increment used in calibrating pressure testing devices on gas piping after appliances are connected

Number:	S0933.12		
Title:	Building Heat Loss Calculations		
Duration:	Total 8 hours	Theory 5 hours	Practical 3 hours
Cross-Reference to Training Standard:	5470.0, 5472.0, 5473.0, 5475.0, 5476.0, 5477.0, 5478.0, 5479.0, 5480.0, 5484.0		

General Learning Outcomes

Upon successful completion the apprentice is able to perform building heat loss calculations.

Learning Outcomes and Content

- 12.1 Name the units of measurement used in calculations to measure the quantity of heat
- 12.2 Name the units of measurement used in calculations to measure the intensity of heat
- 12.3 State the main method of heat transfer or heat loss from a building
- 12.4 Identify the type of material primarily used to retard heat flow from a building
- 12.5 Name two terms used in calculations to represent the coefficient of heat transfer for a particular construction material
- 12.6 Define the term “U factor”
- 12.7 Define the term “inside design temperature” for residential buildings
- 12.8 Define the term “multiplier”
- 12.9 State the coefficient of heat transfer (“U factor”) for single-glazed windows
- 12.10 State the methods used in the calculation of heat loss by infiltration
- 12.11 State the method used in the calculation of heat loss for residential buildings
- 12.12 State the number of air changes for a given room
- 12.13 Calculate the heat loss for each room or area of a building, given pertinent information

Number: S0933.13

Title: **Hydronic Heating System Design**

Duration: Total 6 hours Theory 4 hours Practical 2 hours

Cross-Reference to Training Standard: 5470.0, 5472.0, 5473.0, 5475.0, 5476.0, 5477.0, 5478.0, 5479.0, 5480.0, 5484.0

General Learning Outcomes

Upon successful completion the apprentice is able to design hot water heating systems.

Learning Outcomes and Content

- 13.1 State the normally recommended temperature drop for hot water heating systems in residential buildings
- 13.2 State the temperature drop used for small residential buildings and for large commercial and industrial installations
- 13.3 State why the gpm measurement is used in calculating the flow rate
- 13.4 Name the factors involved in calculating the flow rate for a particular hot water heating system
- 13.5 State the formula for calculating the flow rate
- 13.6 Calculate the gpm flow rate for a given installation
- 13.7 State what would happen to the gpm flow for a circulating pump if the head were decreased
- 13.8 Define the term “measured length”
- 13.9 State the recommended method of allowing for friction loss in valves and fittings for residential buildings
- 13.10 State the established design practices used for calculating the various requirements for a hot water heating system
- 13.11 Select a hot water heating boiler using the manufacturer’s literature and established industry practices
- 13.12 Select a cushion tank using the manufacturer’s literature and established industry practices
- 13.13 Select a circulating pump using the manufacturer’s literature and established industry practices

- 13.14 Design, draw, label, and size the following diagrams from given plans:
- a series-loop, split-circuit hot water heating system
 - a one-pipe, monoflow hot water heating system
 - a two-pipe, reverse return hot water heating system
 - solar and ground source radiant heating system

Number: S0933.14

Title: Principles of Refrigeration

Duration: Total 2 hours Theory 2 hours Practical 0 hours

Cross-Reference to Training Standard: 5470.0, 5472.0, 5473.0, 5475.0, 5476.0, 5477.0, 5478.0, 5479.0, 5480.0, 5484.0

General Learning Outcomes

Upon successful completion the apprentice is able to state the principles of refrigeration.

Learning Outcomes and Content

- 14.1 Define the term refrigeration
- 14.2 Describe the process of mechanical refrigeration
- 14.3 State the physical laws which govern the mechanical refrigeration process
- 14.4 State the function of a refrigerant
- 14.5 State the properties of an ideal refrigerant
- 14.6 State the “Second Law of Thermodynamics”
- 14.7 State the methods of heat transfer involved in refrigeration
- 14.8 Define the following terms and their application in the mechanical refrigeration process:
 - heat
 - temperature
 - pressure
 - pressure - temperature relationship
 - sensible heat
 - specific heat
 - latent heat
 - latent heat of fusion
 - latent heat of vaporization
 - change of state
 - saturation temperature
 - superheated vapour
 - ton of refrigeration

Number: S0933.15

Title: **Basic Refrigeration Cycle**

Duration: Total 3 hours Theory 2 hours Practical 1 hour

Cross-Reference to Training Standard: 5470.0, 5472.0, 5473.0, 5475.0, 5476.0, 5477.0, 5478.0, 5479.0, 5480.0, 5484.0

General Learning Outcomes

Upon successful completion the apprentice is able to state the basic refrigeration cycle.

Learning Outcomes and Content

- 15.1 Name the most frequently used closed refrigeration systems
- 15.2 Identify and list the components of the basic compression refrigeration system
- 15.3 Identify and list the components of the area known as the high-pressure side of a compression refrigeration system
- 15.4 State the definition of the low-pressure side of a compression refrigeration system
- 15.5 State the four different processes that occur in the main components of the basic compression refrigeration system
- 15.6 Define a “direct” refrigeration system
- 15.7 Define an “indirect” refrigeration system
- 15.8 State the type of system usually used for skating rinks or large air conditioning systems
- 15.9 State how the compression and absorption refrigeration systems differ
- 15.10 List the components used by the absorption system in place of the compressor used in the compression system
- 15.11 List the refrigerant used in an absorption system if water is used as the absorbent
- 15.12 List the absorbent used in an absorption system if water is used as the refrigerant
- 15.13 State where small ammonia absorption refrigeration systems are usually used
- 15.14 State where large ammonia absorption refrigeration systems are usually used
- 15.15 Draw and label an illustration of a basic compression refrigeration system showing the main components, direction of flow, and indicating the high and low- pressure sides of the system
- 15.16 Draw and label an illustration of a basic ammonia absorption refrigeration system showing the main components, direction of flow, and indicating the high and low- pressure sides of the system

Number:	S0933.16		
Title:	Refrigeration System Components		
Duration:	Total 12 hours	Theory 8 hours	Practical 4 hours
Cross-Reference to Training Standard:	5470.0, 5472.0, 5473.0, 5475.0, 5476.0, 5477.0, 5478.0, 5479.0, 5480.0, 5484.0		

General Learning Outcomes

Upon successful completion the apprentice is able to describe the operational features of refrigeration system components.

Learning Outcomes and Content

- 16.1 State the purpose of a refrigerant
- 16.2 State the requirements of a refrigerant
- 16.3 State the qualities of a good refrigerant
- 16.4 Describe the classification system for refrigerants
- 16.5 Name the organization that was mainly responsible for introducing the “R” designation and numbering refrigerants
- 16.6 State the purpose of oil in a refrigeration system
- 16.7 Describe the construction features of compressors
- 16.8 State the purpose of a refrigeration compressor
- 16.9 List the classifications of compressors
- 16.10 Explain the cycles of a reciprocating compressor
- 16.11 List the ways to classify reciprocating compressors
- 16.12 List the types of reciprocating compressors whose classification is based on the arrangement of cylinders
- 16.13 State the purpose of the seal around the protruding shaft of the open-type compressor
- 16.14 State how the open-type compressor is connected to an electric motor
- 16.15 State how the hermetic compressor unit differs from the open-type compressor
- 16.16 State the type of service for which the hermetic compressor unit is used
- 16.17 Describe how serviceable hermetic compressor units differ from the sealed type

- 16.18 State the designs of rotary compressors
- 16.19 State the purpose of the single stationary blade in the stationary blade compressor
- 16.20 Describe how the blades or vanes of the rotary blade or vane compressor are forced against the walls of the cylinder
- 16.21 Describe how the refrigerant is forced from intake to discharge in the helical gear compressor
- 16.22 State the direction of movement of the rotor in the stationary blade compressor
State where helical gear compressors are usually used
- 16.23 State the type of displacement created by centrifugal compressors
- 16.24 State why centrifugal compressors are usually limited to large capacity machines (above 50 tons)
- 16.25 State the name given to centrifugal compressors that have more than one impeller
- 16.26 Draw and label a cross-sectional illustration of the arrangement of the rotor, vanes and cylinder of the rotary vane compressor
- 16.27 Draw and label a cross-sectional illustration of the rotor and cylinder of a single stationary blade compressor
- 16.28 Draw and label an illustration of a refrigeration system showing the main components and indicating the high and low pressure sides of the system
- 16.29 Describe the construction features of evaporators
- 16.30 List the types of evaporators
- 16.31 List the classifications of evaporators
- 16.32 Identify the component that controls the flow of liquid refrigerant to the evaporator
- 16.33 Describe the state of matter in which the refrigerant leaves the evaporator
- 16.34 State the amount of liquid refrigerant that is metered to the flooded-type evaporator
- 16.35 List the disadvantages of using flooded type evaporators
- 16.36 State where bare-pipe coil evaporators coils are best suited
- 16.37 State the use for which plate-type evaporator coils are best suited
- 16.38 State the temperature limitations for finned tube coils using air flow by natural convection currents

- 16.39 State what happens to the amount of heat transferred when a fan forces air through the finned tub evaporator in place of the natural convection currents
- 16.40 State another name given to the shell and tube evaporator
- 16.41 Identify the location of the primary and secondary refrigerants used in the direct expansion chiller
- 16.42 Draw and label an illustration of a bare-pipe coil evaporator indicating the metering device and the direction of flow of the refrigerant
- 16.43 Draw and label an illustration of a plate-type coil
- 16.44 Draw and label an illustration of a flooded-type chiller indicating the connections
- 16.45 Describe the construction features of condensers
- 16.46 State the purpose of the condenser in the refrigeration system
- 16.47 List the types of condensers
- 16.48 State the cooling medium (s) used in the evaporative condenser unit
- 16.49 Identify the type of condenser recommended for large-tonnage refrigeration systems
- 16.50 State why natural circulation air-cooled condensers are not suitable for large-sized refrigeration units
- 16.51 Name the equipment used to force air across the condenser coil of a forced-air-cooled condenser
- 16.52 State the three basic types of water-cooled condensers
- 16.53 Identify in which tube the cooling water flows in a double-tube condenser
- 16.54 Identify which part of the shell and coil condenser contains the refrigerant
- 16.55 Identify which part of the shell and tube condenser determines the number of passes of cooling water through the condenser
- 16.56 List the methods of heat transfer used by evaporative condensers
- 16.57 State how the water level in the pan of an evaporative condenser is maintained
- 16.58 Draw and label a diagrammatic illustration of an evaporative condenser
- 16.59 Draw and label a diagrammatic illustration of a double tube condenser
- 16.60 Describe the construction features of metering devices
- 16.61 State what happens to the refrigerant as it passes through the metering device

- 16.62 Name the type of refrigeration machine that can use manually operated metering valves
- 16.63 Name the type of evaporator coil that uses a float-operated valve as a metering device
- 16.64 Describe the main difference between the operation of a manually operated metering valve and the of a constant pressure expansion valve
- 16.65 Name the type of evaporator coil that uses a constant pressure expansion valve
- 16.66 Name the type of system that cannot use a constant pressure expansion valve
- 16.67 Name the type of metering device that is most frequently used in refrigeration and air conditioning systems
- 16.68 Name the type of liquid usually used in the sensing bulb and tubing of the thermostatic expansion valve
- 16.69 Describe what happens to the thermostatic expansion valve when the temperature of the refrigerant leaving the evaporator rises
- 16.70 Describe what happens to the thermostatic expansion valve when the compressor starts
- 16.71 State the size and length of the capillary tubing when used as a metering device in a refrigeration system
- 16.72 State what happens to the pressure throughout a refrigeration system using a capillary tube as a metering device when the compressor stops
- 16.73 Draw and label a diagrammatic illustration of a constant pressure expansion valve
- 16.74 Draw and label a diagrammatic illustration of a thermostatic expansion valve correctly located on the piping to the evaporator and include the sensing bulb
- 16.75 Draw and label a diagrammatic illustration of a capillary tube connected to the inlet of the evaporator coil
- 16.76 Describe the construction features of cooling towers
- 16.77 Name the component in the refrigeration system that is connected to the cooling tower
- 16.78 State two reasons for using a cooling tower
- 16.79 Identify the type of heat that is extracted from the un-evaporated portion of the sprayed condenser water thereby reducing its temperature
- 16.80 State what happens to the water in the bottom of the cooling tower

- 16.81 State how water lost in the evaporation process is replenished
- 16.82 Name the two basic types of cooling towers
- 16.83 State where natural draft cooling towers should be placed
- 16.84 State why mechanical draft cooling towers are so named
- 16.85 Indicate the path of air flow in an induced draft cooling tower
- 16.86 List three deposits that could be left on the inside surfaces of the cooling tower if the water is not treated
- 16.87 Draw and label a diagrammatic illustration of the piping connections between a cooling tower and a water-cooled condenser
- 16.88 Draw and label an illustration of a typical induced draft-cooling tower indicating water and air inlets and outlets

Number: S0933.17

Title: **Refrigeration System Commissioning**

Duration: Total 1 hour Theory 1 hour Practical 0 hours

Cross-Reference to Training Standard: 5470.0, 5472.0, 5473.0, 5475.0, 5476.0, 5477.0, 5478.0, 5479.0, 5480.0, 5484.0

General Learning Outcomes

Upon successful completion the apprentice is able to describe the commissioning procedures for a refrigeration system.

Learning Outcomes and Content

- 17.1 Describe recommended system testing procedures
- 17.2 Perform tests according to manufacturers' and government regulations
- 17.3 Test a refrigeration system for low and high pressures using a manifold gauge set
- 17.4 Test system-operating pressures and control functions
- 17.5 Test for refrigerant leaks
- 17.6 Identify leak-testing methods:
 - dyes
 - electronic leak detectors
 - bubble producing solutions
 - nitrogen testing
 - trace gas testing
- 17.7 Identify potential location of leaks:
 - fittings
 - lines
 - seals
 - compressor
 - evaporator
 - condenser

Number: S0933.18

Title: Principles of Air Conditioning

Duration: Total 1 hour Theory 1 hour Practical 0 hours

Cross-Reference to Training Standard: 5470.0, 5472.0, 5473.0, 5475.0, 5476.0, 5477.0, 5478.0, 5479.0, 5480.0, 5484.0

General Learning Outcomes

Upon successful completion the apprentice is able to describe the principles of air conditioning.

Learning Outcomes and Content

- 18.1 Define the term “air conditioning”
- 18.2 Describe the process of mechanical air conditioning
- 18.3 State the physical laws which govern the air conditioning process
- 18.4 State the function of an air conditioning system
- 18.5 State the methods of heat transfer involved in air conditioning

Number:	S0933.19		
Title:	Psychometrics		
Duration:	Total 3 hours	Theory 1 hour	Practical 2 hours
Cross-Reference to Training Standard:	5470.0, 5472.0, 5473.0, 5475.0, 5476.0, 5477.0, 5478.0, 5479.0, 5480.0, 5484.0		

General Learning Outcomes

Upon successful completion the apprentice is able to interpret and use a psychometric chart.

Learning Outcomes and Content

- 19.1 Define the term “psychometrics”
- 19.2 List seven interrelated properties of air
- 19.3 State how the wet bulb thermometer differs from the dry thermometer
- 19.4 Define the term “dewpoint temperature”
- 19.5 Define the term “relative humidity”
- 19.6 State the number of grains of water vapour contained in 1 pound of air
- 19.7 State in which unit the specific volume of air is measured
- 19.8 State the name given to the instrument containing the wet and dry bulb thermometers
- 19.9 State how the instrument containing the wet and dry bulb thermometers should be used
- 19.10 State what percentage of relative humidity exists when both the wet and dry bulb thermometers read the same
- 19.11 Calculate the following, given the relative humidity, dry bulb temperature, and a psychometric chart:
 - wet bulb temperature
 - dewpoint temperature
 - grains of moisture/lb. of dry air
 - specific volume
 - enthalpy

Number: S0933.20
Title: **Air Conditioning Applications**
Duration: Total 4 hours Theory 3 hours Practical 1 hour
Cross-Reference to Training Standard: 5470.0, 5472.0, 5473.0, 5475.0, 5476.0, 5477.0, 5478.0, 5479.0, 5480.0, 5484.0

General Learning Outcomes

Upon successful completion the apprentice is able to state the application and operation of an air conditioning system.

Learning Outcomes and Content

- 20.1 Describe the types of air conditioning systems
- 20.2 Identify the name given to the two heating coils located in the plenum of large air conditioning plants
- 20.3 State the two mediums commonly used in the heat coils
- 20.4 Identify the type of steam trap used on heating coils
- 20.5 State when a vacuum breaker must be installed on a heating coil
- 20.6 State whether warm or cold air can hold more moisture
- 20.7 Identify the most controllable method of humidification
- 20.8 State the reason why banks of steam heating coils are used in large air conditioning systems
- 20.9 Identify the correct method of piping a water-cooling coil (direction of flow)
- 20.10 Identify the type of ducting normally used for low velocity air conditioning systems
- 20.11 Name the two main classifications of air conditioning systems
- 20.12 Define a unitary air conditioning system
- 20.13 List the three general classifications of filters used in air conditioning systems
- 20.14 State the main function of eliminator plates
- 20.15 State the direction of discharge for spray installed in air washers
- 20.16 State how the water level is maintained in the tank or pan of the air washer
- 20.17 State when it is usually necessary to humidify conditioned air

- 20.18 Describe the application and operation of air conditioning systems
- 20.19 State the basic operating principle of electronic filters
- 20.20 State the location for control valves on a cooling coil
- 20.21 Identify the location of a possible third heating coil in large air conditioning systems
- 20.22 State how the air washer can serve as a humidifier
- 20.23 State how a steam humidifier operates
- 20.24 State how the temperature of the cooling water can be controlled
- 20.25 Identify the sequence of components through which air passes in a central plant during the heating cycle
- 20.26 Identify the sequence of components through which air passes in a central plant during the cooling cycle
- 20.27 Draw and label a single-line illustration of a two-row heating coil complete with piping connections for hot water
- 20.28 Draw and label a single-line illustration of a bank of three steam heating coils with piping connections to and from the units and mains
- 20.29 Draw and label an illustration of a single-bank air washer correctly locating the spray nozzles, eliminator plates, pan or tank, heat exchanger, pump and connecting piping
- 20.30 Draw and label a single-line illustration of the components of a central air conditioning plant to completely condition the air

Number: S0933.21

Title: **Air Conditioning System Components**

Duration: Total 2 hours Theory 2 hours Practical 0 hours

Cross-Reference to Training Standard: 5470.0, 5472.0, 5473.0, 5475.0, 5476.0, 5477.0, 5478.0, 5479.0, 5480.0, 5484.0

General Learning Outcomes

Upon successful completion the apprentice is able to describe the construction features and operation of air conditioning system components.

Learning Outcomes and Content

21.1 Describe the construction features and operation of the following air conditioning system components:

- condenser
- receiver dehydration
- accumulator-dryer
- evaporator
- compressor
- hoses, lines and fittings
- low and high pressure cutout
- low charge protection
- evaporator temperature control
- cycling clutch control
- orifice tubes
- expansion valves

Number: S0933.22

Title: **Air Conditioning System Commissioning**

Duration: Total 1 hour Theory 1 hour Practical 0 hours

Cross-Reference to Training Standard: 5470.0, 5472.0, 5473.0, 5475.0, 5476.0, 5477.0, 5478.0, 5479.0, 5480.0, 5484.0

General Learning Outcomes

Upon successful completion the apprentice is able to describe the testing procedures of an air conditioning/refrigeration system.

Learning Outcomes and Content

- 22.1 Describe recommended system testing procedures
- 22.2 Perform tests according to manufacturers' and government regulations
- 22.3 Test an air conditioning system for low and high pressures using a manifold gauge set
- 22.4 Test system-operating pressures and control functions
- 22.5 Test for refrigerant leaks
- 22.6 Identify leak-testing methods:
 - dyes
 - electronic leak detectors
 - bubble producing solutions
 - nitrogen testing
 - trace gas testing
- 22.7 Identify potential location of leaks:
 - fittings
 - lines
 - seals
 - compressor
 - evaporator
 - condenser

Number: S0933.23

Title: Heat Pump Principles and Applications

Duration: Total 8 hours Theory 7 hours Practical 1 hour

Cross-Reference to Training Standard: 5470.0, 5472.0, 5473.0, 5475.0, 5476.0, 5477.0, 5478.0, 5479.0, 5480.0, 5484.0

General Learning Outcomes

Upon successful completion the apprentice is able to describe the fundamentals, types, principles and applications of heat pumps.

Learning Outcomes and Content

- 23.1 Describe heat pump fundamentals
- 23.2 List three advantages of using a heat pump system to condition a building
- 23.3 State the number of BTUs produced by an electric resistance heater using 1 kilowatt
- 23.4 State why a kilowatt of electrical energy used by a heat pump will produce approximately three to four times more BTUs than the same kilowatt used in a resistance heater
- 23.5 Define the meaning of the abbreviation “cop”
- 23.6 State the general cop for conventional heating systems using natural gas, coal, or other fossil fuels
- 23.7 State the cop for electric resistance heaters
- 23.8 List five heat sources which can be utilized by the heat pump
- 23.9 State another name for a heat source
- 23.10 Describe the fundamentals of a deep lake cooling system
- 23.11 Describe the fundamentals of a ground source heating system
- 23.12 State why water source heat pumps are considered the most dependable
- 23.13 State the two sources for a water source heat pump
- 23.14 State the best water source to use if it is available
- 23.15 State why ground coils are not predominantly used
- 23.16 Name the two types of solar systems used for heat pumps

- 23.17 Name the source of heat for internal heat source heat pumps
- 23.18 List four common types of heat pump cycles
- 23.19 List the three methods by which heat pumps are classified
- 23.20 Describe the construction features of a ground source heating system
- 23.21 Describe heat pump principles and applications
- 23.22 State what happens to the operation of the heat pump as the outside air temperature drops
- 23.23 State the most commonly used heat source
- 23.24 State the recommended depth for ground coils
- 23.25 State why an air source heat pump should be selected according to its cooling load and not its heating load
- 23.26 Name the two methods used to change the heat pump cycle from heating to cooling and vice versa
- 23.27 Name the two metering devices commonly used by heat pump systems
- 23.28 Identify where the metering device is located in the heat pump system
- 23.29 Name the valve that reverses the flow of refrigerant in the heat pump system
- 23.30 State why the lines from the compressor to the evaporator and condenser are the same size
- 23.31 State type of connections used for jointing copper piping of heat pump systems
- 23.32 State the type of compressor usually used for large heat pump systems
- 23.33 State the type of unit used for small heat pump systems
- 23.34 State the main reason for using a liquid receiver in the heat pump system
- 23.35 State the most common method of providing supplementary heating for heat pump systems
- 23.36 State why frosting occurs on the outdoor air coil of a heat pump
- 23.37 List the three basic functions automatically performed by the heat pump to solve the problem of frosting
- 23.38 Explain the operation of a ground source heating system
- 23.39 Name the two different methods used to detect frost buildup on the outdoor coil

- 23.40 State the common substance used for heat storage by a heat pump system
- 23.41 List the three main groups or classification of heat pumps available
- 23.42 State the usual range of sizes for unitary heat pumps
- 23.43 State the maximum size of heat pumps
- 23.44 Draw and label diagrammatic illustrations of two typical four-way valve patterns
- 23.45 Draw and label diagrammatic illustrations of thermostatic expansion valves correctly located in the heat pump system, indicating the direction of flow for both the heating and cooling cycles
- 23.46 Draw and label a diagrammatic illustration of an air heat pump on a cooling cycle
- 23.47 Draw and label a diagrammatic illustration of a water to air heat pump on a heating cycle
- 23.48 State the installation requirements for a ground source heat pump
- 23.49 State the installation requirements for a deep lake cooling system

Number: S0933.24

Title: Solar Heat

Duration: Total 3 hours Theory 3 hours Practical 0 hours

Cross-Reference to Training Standard: 5470.0, 5472.0, 5473.0, 5475.0, 5476.0, 5477.0, 5478.0, 5479.0, 5480.0, 5484.0

General Learning Outcomes

Upon successful completion the apprentice is able to describe the fundamentals, construction features and operation of a solar heating system.

Learning Outcomes and Content

24.1 Describe the fundamental types of solar heating systems:

- direct systems
- indirect systems
- thermo siphons
- drain down systems
- swimming pool systems

24.2 Describe the various construction features of different solar collectors”

- flat plate collectors
- evacuated tube collectors
- concentrating collectors
- transpired collectors
- batch collectors

24.3 Explain the applications of a solar heating system:

- solar process heat
- active solar cooling

Number:	S0933.25		
Title:	Introduction to High Temperature Hot Water Systems		
Duration:	Total 3 hours	Theory 3 hours	Practical 0 hours
Cross-Reference to Training Standard:	5470.0, 5472.0, 5473.0, 5475.0, 5476.0, 5477.0, 5478.0, 5479.0, 5480.0, 5484.0		

General Learning Outcomes

Upon successful completion the apprentice is able to describe the fundamentals of high temperature hot water systems.

Learning Outcomes and Content

- 25.1 Describe the fundamentals of a high temperature hot water (HTHW) system
- 25.2 State the type of indirect heat transfer unit usually used by HTHW systems
- 25.3 State the reason for operating circulating pumps continuously
- 25.4 State the principal difference between high temperature and low temperature hot water systems
- 25.5 Define the term “saturation temperature”
- 25.6 State what happens to the heat content of water as the water temperature increases
- 25.7 State what happens to water in the HTHW system if the pressure is suddenly reduced to atmospheric conditions
- 25.8 State what happens to the water volume as the temperature is increased
- 25.9 State the specific heat of water
- 25.10 State the comparison between the heat-carrying capacities of equal weights of air and water
- 25.11 State the type of heat used by steam for heating purposes
- 25.12 State the type of heat used by water in transporting heat from one place to another
- 25.13 State the number of BTUs released in cooling a given amount of water a given temperature
- 25.14 List the advantages of installing a HTHW system as compared to a high pressure steam system

- 25.15 Explain the thermal flywheel effect experienced in the operation of a HTHW system
- 25.16 List the disadvantages experienced with the installation of a HTHW system
- 25.17 State the temperature and pressure ranges associated with low temperature hot water systems
- 25.18 State the temperature and pressure ranges associated with medium temperature hot water systems
- 25.19 State the temperature and pressure ranges associated with HTHW systems
- 25.20 State the residential applications for HTHW systems used in district heating

Number:	S0933.26
Title:	Direct Return High Temperature Hot Water Systems
Duration:	Total 3 hours Theory 2 hours Practical 1 hour
Cross-Reference to Training Standard:	5470.0, 5472.0, 5473.0, 5475.0, 5476.0, 5477.0, 5478.0, 5479.0, 5480.0, 5484.0

General Learning Outcomes

Upon successful completion the apprentice is able to illustrate a direct return high temperature hot water system:

Learning Outcomes and Content

- 26.1 Explain why very little make-up water is required in a HTHW system
- 26.2 Explain why provision must be made for drainage at any low points in the system
- 26.3 State the range of temperature drop normally used in the design of the HTHW system
- 26.4 Explain why the pressure on the system must be kept above the pressure corresponding to the saturation temperature of water in the system
- 26.5 Explain why the high heat content of the water in a HTHW system acts as a “thermal flywheel” by evening out load fluctuations
- 26.6 List the components of a HTHW system
- 26.7 State the principal difference between high and low temperature hot water systems
- 26.8 State the purpose of converters in a HTHW system
- 26.9 State the uses of heat exchangers in a HTHW system
- 26.10 State which type of piping arrangement would be more suitable for district heating or institutional buildings
- 26.11 Draw and label a typical illustration of a heat exchanger located in a HTHW system supplying heat to a lower-temperature hot water system (using a two-way valve)
- 26.12 Draw and label a single line illustration of a direct return HTHW system

Number: S0933.27

Title: **Pressurization of High Temperature Hot Water Systems**

Duration: Total 4 hours Theory 3 hours Practical 1 hour

Cross-Reference to Training Standard: 5470.0, 5472.0, 5473.0, 5475.0, 5476.0, 5477.0, 5478.0, 5479.0, 5480.0, 5484.0

General Learning Outcomes

Upon successful completion the apprentice is able to state the pressurization of a high temperature hot water system.

Learning Outcomes and Content

- 27.1 State the reason for pressurizing a HTHW system
- 27.2 Explain why low temperature water systems usually require smaller compression tanks than high temperature systems
- 27.3 Identify the methods of pressurizing HTHW systems
- 27.4 State the problem when pressurizing large HTHW systems with steam
- 27.5 State another name given to the compression tank
- 27.6 State what happens to the pressure of the inert gas in the top of the compression tank when the volume of water in the system increases
- 27.7 State how the compression tank is connected to piping in the system
- 27.8 State what happens to excess water after a predetermined pressure has been reached in systems using a compression tank
- 27.9 Explain why air is not recommended for pressurizing HTHW systems
- 27.10 State why nitrogen is used to pressurize HTHW systems
- 27.11 Draw and label a single-line illustration of a steam boiler and compression tank complete with connecting piping

Number:	S0933.28
Title:	High Temperature Hot Water System Components
Duration:	Total 6 hours Theory 5 hours Practical 1 hour
Cross-Reference to Training Standard:	5470.0, 5472.0, 5473.0, 5475.0, 5476.0, 5477.0, 5478.0, 5479.0, 5480.0, 5484.0

General Learning Outcomes

Upon successful completion the apprentice is able to describe the function of components of high temperature hot water systems.

Learning Outcomes and Content

- 28.1 Identify the types of boilers and generators used in HTHW systems
- 28.2 Describe how the boiler or generator is selected
- 28.3 State how the load is usually determined
- 28.4 Describe the basic function of the boiler or generator
- 28.5 State how the hot water is heated in the heat exchanger type expansion drum
- 28.6 State to where the system water is returned when a steam boiler is used for the HTHW system
- 28.7 Describe how return water is returned to the expansion drum
- 28.8 State the water source for boiler feedwater pumps
- 28.9 Describe the type of steam boiler used for HTHW installations
- 28.10 Explain how a hot water generator differs from a steam boiler
- 28.11 State what causes circulation in a HTHW generator
- 28.12 State the location on the generator where water from the system is returned
- 28.13 Explain how equal pressures and water levels are maintained in multiple-boiler installations
- 28.14 Explain why boiler or generator accessories used on high-pressure steam systems are not necessarily suitable for HTHW
- 28.15 Describe the function of circulation pumps used on HTHW systems
- 28.16 State the difference between pumps used for low temperature and HTHW systems
- 28.17 State why stand-by circulating pumps are used for HTHW systems
- 28.18 State the purpose of the mixing connection

- 28.19 State the ideal location for the circulating pump in a HTHW system
- 28.20 Explain what could happen if the circulating pump were located on the return line
- 28.21 State where the pump should be installed in relation to the boiler or generator outlet
- 28.22 Define the term “cavitation”
- 28.23 State another name for “cavitation”
- 28.24 Describe the results of cavitation
- 28.25 List the factors to be considered in the installation of a circulation pump
- 28.26 Explain the initial operations performed on the circulating pump in the starting procedure for a HTHW system
- 28.27 State the final operating condition of the circulating pump in the starting procedure before the discharge valve to the system is opened
- 28.28 Draw and label a single-line illustration of a steam boiler, pump, and connecting piping for a HTHW system
- 28.29 List the pipe and components used on HTHW systems
- 28.30 List the combination of pressures that determines the total operating pressure on which the selection of pipe, valves and fittings is based
- 28.31 List the factors that determine the piping arrangement for the HTHW system
- 28.32 State where most distribution mains are run
- 28.33 State the methods used when installing mains underground
- 28.34 State the pressure rating of pipe, valves and fittings used for systems operating for given ranges
- 28.35 State the type of joints used on medium or HTHW systems
- 28.36 State the type of expansion devices used to alleviate the thermal expansion of pipe
- 28.37 State the type of valves used in HTHW mains
- 28.38 List the materials of which valves used in HTHW systems are made
- 28.39 Describe the type of valves used to connect individual heat transfer equipment
- 28.40 Describe where control valves for heat transfer equipment should be located
- 28.41 Draw and label an illustration of the piping arrangement for venting air and blowing down sludge as used in HTHW systems
- 28.42 Draw and label an illustration of two expansion bends used on HTHW systems

Number: S0933.29

Title: **Commissioning High Temperature Hot Water Systems**

Duration: Total 1 hour Theory 1 hour Practical 0 hours

Cross-Reference to Training Standard: 5470.0, 5472.0, 5473.0, 5475.0, 5476.0, 5477.0, 5478.0, 5479.0, 5480.0, 5484.0

General Learning Outcomes

Upon successful completion the apprentice is able to describe the commissioning procedures of a high temperature hot water system.

Learning Outcomes and Content

- 29.1 Describe the recommended system testing procedures for HTHW Systems
- 29.2 Explain how to set HTHW system operating pressures
- 29.3 Explain how to test HTHW system control functions
- 29.4 Explain how to test HTHW systems for leaks

Number: S0933.30

Title: **Cross Connection and Backflow Prevention**

Duration: Total 6 hours Theory 6 hours Practical 0 hours

Cross-Reference to Training Standard: 5470.0, 5472.0, 5473.0, 5475.0, 5476.0, 5477.0, 5478.0, 5479.0, 5480.0, 5484.0

General Learning Outcomes

Upon successful completion the apprentice is able to recognize and explain cross connections and backflow prevention.

Learning Outcomes and Content

30.1 Define the following terms:

- backflow preventer
- cross connection
- backflow
- back siphonage backflow
- back-pressure backflow
- pollutant
- critical level
- contaminant
- minor hazard
- moderate hazard
- severe hazard
- individual isolation
- area or zone isolation
- premise isolation

30.2 Identify the ten different ways to control backflow conditions including:

- barometric loops
- air gaps
- hose connection vacuum breakers
- laboratory faucet vacuum breakers
- atmospheric vacuum breakers
- pressure vacuum breakers
- dual check with intermediate port (vending machine backflow preventer)
- dual check with atmospheric port
- double check valve assembly
- reduced pressure assembly

- 30.3 Explain how to select a backflow prevention device
- 30.4 Identify the type of building that requires premise isolation
- 30.5 List five cross connections that constitute minor hazards
- 30.6 List five cross connections that constitute moderate hazards
- 30.7 List five cross connections that constitute severe hazards
- 30.8 Identify the minimum height of an air gap
- 30.9 Explain the concern in the installation of air gaps in areas with toxic or hazardous atmospheres
- 30.10 Describe the installation requirements for atmospheric vacuum breakers including the height above the critical level at which the device must be installed
- 30.11 Describe the installation requirements for pressure vacuum breakers including the height above the critical level at which the device must be installed
- 30.12 Explain why shut off valves must be supplied with all testable backflow prevention devices
- 30.13 Identify the backflow preventer that cannot be operated under continuous pressure
- 30.14 Identify the backflow prevention devices that may be used to isolate minor hazards only
- 30.15 Identify the backflow prevention devices that may be used to isolate minor and moderate hazards
- 30.16 Identify the backflow prevention devices that may be used to isolate minor, moderate and severe hazards
- 30.17 Identify the backflow prevention devices that may be used to protect against back-siphonage backflow conditions only
- 30.18 Identify the backflow prevention devices that may be used to protect against both back-siphonage and backpressure backflow conditions
- 30.19 Explain the installation recommendations for backflow prevention devices
- 30.20 Identify when backflow prevention devices must be tested
- 30.21 Identify who may test backflow prevention devices in Ontario

Evaluation Structure		
Theory Testing	Practical Application Testing	Final Assessment
60%	10%	30%

Steamfitter – Level 3

Number:	S0934		
Title:	Trade Documentation III		
Duration:	Total 48 hours	Theory 18 hours	Practical 30 hours
Prerequisites:	Level II		
Content:	S0934.1	Computer Aided Design	
	S0934.2	Process Flow Diagrams	
	S0934.3	Spool Sheets	
	S0934.4	Plan Drawings	
	S0934.5	Manufacturers' Diagrams	
	S0934.6	Job Specifications	
	S0934.7	Labour and Material Estimates	
	S0934.8	Job Schedules and Critical Path Planning	
	S0934.9	Memorandums, Reports, Estimates and Forms	
	S0934.10	Meeting Organization	
	S0934.11	Job Resumes	

Evaluation & Testing: Assignments related to theory and appropriate application skills.
Minimum of one mid-term test during the 8-week term.
Final exam at end of term.
Periodic quizzes.

Instructional and Delivery Strategies: The use of a computer-aided design program is encouraged throughout this reportable subject

Reference Materials: IPT Pipe Trades Handbook
Alberta steamfitting modules

Recommended Equipment List:

drafting tables
job specification books
set of blueprints for architectural and
mechanical applications
scale rules
“T” squares compass
30°, 60° and 45° set squares
protractor
computer with CAD program

Number: S0934.1

Title: **Computer-Aided Design**

Duration: Total 6 hours Theory 2 hours Practical 4 hours

Cross-Reference to Training Standard: 5472.0, 5473.0, 5474.0, 5475.0, 5476.0, 5480.0

General Learning Outcomes

Upon successful completion the apprentice is able to navigate a computer-aided design program to read construction drawings.

Learning Outcomes and Content

- 1.1 Turn on a computer
- 1.2 Load an operating system
- 1.3 Load a computer-aided design (CAD) program
- 1.4 Navigate CAD software
- 1.5 Read CAD generated drawings

Number: S0934.2

Title: Process Flow Diagrams

Duration: Total 3 hours Theory 2 hours Practical 1 hour

Cross-Reference to Training Standard: 5472.0, 5473.0, 5474.0, 5475.0, 5476.0, 5480.0

General Learning Outcomes

Upon successful completion the apprentice is able to read of process flow diagrams.

Learning Outcomes and Content

- 2.1 Identify the types of process flow diagrams
- 2.2 Define the term “P&ID”
- 2.3 Read P&ID drawings to understand equipment and piping functions
- 2.4 Identify the major equipment piping and valves
- 2.5 Identify the process lines and pipe sizes for each pipeline
- 2.6 Identify line numbers
- 2.7 Identify flow direction
- 2.8 Identify instrumentation and control devices
- 2.9 Develop a drawing in a P&ID format given relevant information

Number: S0934.3

Title: **Spool Sheets**

Duration: Total 3 hours Theory 1 hour Practical 2 hours

Cross-Reference to Training Standard: 5472.0, 5473.0, 5474.0, 5475.0, 5476.0, 5480.

General Learning Outcomes

Upon successful completion the apprentice is able to read spool sheets.

Learning Outcomes and Content

- 3.1 Identify a double line orthographic spool drawing
- 3.2 Identify a single line orthographic spool drawing
- 3.3 Identify a single line isometric spool drawing
- 3.4 Describe the spool numbering process
- 3.5 Create a spool drawing in isometric
- 3.6 Create a bill of materials from a spool drawing

Number: S0934.4

Title: **Plan Drawings**

Duration: Total 12 hours Theory 3 hours Practical 9 hours

Cross-Reference to Training Standard: 5472.0, 5473.0, 5474.0, 5475.0, 5476.0, 5480

General Learning Outcomes

Upon successful completion the apprentice is able to read architectural and mechanical plan drawings.

Learning Outcomes and Content

- 4.1 Identify a site plan
- 4.2 Locate dimensions on architectural drawings that relate to pipe drawings and installation
- 4.3 Find schedules for ceiling height and wall construction
- 4.4 Locate the building orientation and elevation
- 4.5 Locate structural steel drawings to determine hanger points
- 4.6 Identify the site serving drawing
- 4.7 Identify mechanical drawings by their trade grouping
- 4.8 Identify electrical light fixture locations
- 4.9 Locate electrical rooms
- 4.10 Locate sprinkler standpipe
- 4.11 Find the building water main entry points
- 4.12 Locate sheet metal routes and sizes
- 4.13 Locate piping schematic drawings
- 4.14 Locate mechanical rooms
- 4.15 Locate the radiator schedule
- 4.16 Identify the drawings required to check for piping system interferences

Number: S0934.5

Title: **Manufacturers' Diagrams**

Duration: Total 3 hours Theory 1 hour Practical 2 hours

Cross-Reference to Training Standard: 5472.0, 5473.0, 5474.0, 5475.0, 5476.0, 5480.0

General Learning Outcomes

Upon successful completion the apprentice is able to locate and read manufacturers' diagrams.

Learning Outcomes and Content

- 5.1 Describe the features of manufacturers' diagrams
- 5.2 Identify a shop drawing
- 5.3 Locate pertinent dimensions on a shop drawing
- 5.4 Identify connecting sizes on a shop drawing
- 5.5 Search the internet for specified manufacturers' drawings and report findings

Number: S0934.6

Title: Job Specifications

Duration: Total 6 hours Theory 3 hours Practical 3 hours

Cross-Reference to Training Standard: 5472.0, 5473.0, 5474.0, 5475.0, 5476.0, 5480.0

General Learning Outcomes

Upon successful completion the apprentice is able to read job specifications.

Learning Outcomes and Content

- 6.1 Interpret job specifications
- 6.2 State the number of sections to a job specification, and how they relate to the steamfitting trade
- 6.3 Answer a number of detailed questions, given a set of job specifications

Number: S0934.7

Title: **Labour and Material Estimates**

Duration: Total 9 hours Theory 3 hours Practical 6 hours

Cross-Reference to Training Standard: 5472.0, 5473.0, 5474.0, 5475.0, 5476.0, 5480.0

General Learning Outcomes

Upon successful completion the apprentice is able to read material take-offs from mechanical drawings and estimate installation labour costs.

Learning Outcomes and Content

- 7.1 Describe the various rules of thumb for labour and material estimates
- 7.2 Use a CAD program to view a material take-off list for a specified drawing
- 7.3 Produce a detailed labour and material estimate from a given set of mechanical drawings

Number: S0934.8

Title: Job Schedules and Critical Path Planning

Duration: Total 3 hours Theory 1.5 hours Practical 1.5 hours

Cross-Reference to Training Standard: 5472.0, 5473.0, 5474.0, 5475.0, 5476.0, 5480.0

General Learning Outcomes

Upon successful completion the apprentice is able to prepare steamfitter related piping job schedules

Learning Outcomes and Content

- 8.1 State the principles of critical path planning
- 8.2 Illustrate the functions of a critical path chart
- 8.3 List the requirements for dealing with inspectors and other trades on-site
- 8.4 List the information required to produce a job schedule
- 8.5 Prepare a job schedule based on given related information

Number: S0934.9

Title: **Memorandums, Reports, Estimates and Forms**

Duration: Total 1 hour Theory 0.5 hours Practical 0.5 hours

Cross-Reference to Training Standard: 5472.0, 5473.0, 5474.0, 5475.0, 5476.0, 5480.0

General Learning Outcomes

Upon successful completion the apprentice is able to prepare trade related memos, reports, estimates and forms.

Learning Outcomes and Content

- 9.1 Identify memorandums, reports and forms
- 9.2 Prepare a memorandum
- 9.3 Prepare a job progress report
- 9.4 Prepare a customer job cost estimate

Number: S0934.10

Title: Meeting Organization

Duration: Total 1 hour Theory 0.5 hours Practical 0.5 hours

Cross-Reference to Training Standard: 5472.0, 5473.0, 5474.0, 5475.0, 5476.0, 5480.0

General Learning Outcomes

Upon successful completion the apprentice is able to plan and prepare for a job meeting.

Learning Outcomes and Content

- 10.1 Define “job meeting”
- 10.2 Define “agenda”
- 10.3 List the commonly used rules of order for a meeting
- 10.4 Prepare for a simulated job meeting
- 10.5 Prepare a motion for the meeting
- 10.6 Participate in a simulated job meeting in the classroom
- 10.7 Take notes on main points

Steamfitter – Level 3

Number: S0934.11

Title: **Job Resumes**

Duration: Total 1 hour Theory 0.5 hours Practical 0.5 hours

Cross-Reference to Training Standard: 5472.0, 5473.0, 5474.0, 5475.0, 5476.0, 5480.0

General Learning Outcomes

Upon successful completion the apprentice is able to prepare a job resume.

Learning Outcomes and Content

11.1 Prepare a job resume in a specified format

Evaluation Structure		
Theory Testing	Practical Application Testing	Final Assessment
35%	35%	30%

Steamfitter – Level 3

Number:	S0935		
Title:	Welding III		
Duration:	Total 24 hours	Theory 15 hours	Practical 9 hours
Prerequisites:	Welding Level II		
Content:	S0934.1	Welding Codes and Standards	
	S0934.2	Welding Metallurgy and Quality Control	
	S0934.3	Shielded Metal Arc Welding	
	S0934.4	Metal Inert Gas Welding	
	S0934.5	Tungsten Inert Gas Welding	
Evaluation & Testing:	Assignments related to theory and appropriate application skills. Minimum of one mid-term test during the 8-week term. Final exam at end of term. Periodic quizzes.		

Instructional and Delivery Strategies: Welding theory will be emphasized to help the apprentice learning the metallurgy, codes, standards, quality control and to work well with a welder-partner on the job.

Reference Materials: IPT Pipe Trades Handbook
IPT Metal Trades Handbook
Alberta steamfitting modules

Recommended Equipment List: prescribed welding safety equipment
shielded metal arc welding (SMAW) equipment
metal inert gas welding (MIG) equipment
tungsten inert gas welding (TIG) equipment
protective safety equipment including goggles,
hearing and breathing protection
approved ventilated welding area
welding booths
grinders
files
wire brushes

Number: S0935.1

Title: **Welding Codes and Standards**

Duration: Total 3 hours Theory 3 hours Practical 0 hours

Cross-Reference to Training Standard: 5472.0, 5473.0, 5474.0, 5475.0, 5476.0, 5478.0, 5479.0, 5480.0, 5484.0

General Learning Outcomes

Upon successful completion the apprentice is able to state the various code requirements

Learning Outcomes and Content

- 1.1 Identify the applicable section of the Ontario Boilers and Pressure Vessels Act which contains requirements for steamfitting-related welding operations
- 1.2 Identify applicable sections of the ASME and CWB codes from a given welding procedure qualification form
- 1.3 Describe the requirements of welding codes and standards for:
 - pressure welding applications to the ASME Boiler and Pressure Vessel Code
 - base and filler metal requirements to Section II
 - product design and manufacture requirements to Section III or VIII
 - welding procedure and performance qualification requirements to Section IX
 - structural welding applications to the CSA Structural Welding Standards
 - filler metal requirements to CSA W48
 - company and personnel requirements to CSA W47.1
 - product design and manufacture requirements to CSA W59
 - material test reports
 - other codes and standards

Number: S0935.2

Title: **Welding Metallurgy and Quality Control**

Duration: Total 3 hours Theory 3 hours Practical 0 hours

Cross-Reference to Training Standard: 5472.0, 5473.0, 5474.0, 5475.0, 5476.0, 5478.0, 5479.0, 5480.0, 5484.0

General Learning Outcomes

Upon successful completion the apprentice is able to explain welding metallurgy and quality control.

Learning Outcomes and Content

- 2.1 Identify the fundamentals of metallurgy required for the production of quality welds including:
 - mechanical properties
 - tensile strength
 - impact strength
 - hardness
 - ductility
 - chemical properties
 - corrosion resistance
- 2.2 Describe the following procedures:
 - preheating
 - post heating
 - stress relief
- 2.3 Define the fundamentals of distortion control
 - selection of preventative method
 - distortion allowances
 - preheating
 - back step
 - weld progression
 - vertical up vs. vertical down
 - continuous vs. intermittent welding
 - pre-setting joints
 - jigs and fixtures
 - effects of travel speed
 - effects of weld size
 - effects of bead size
 - effects of over welding
 - multiple pass vs. single pass

2.4 Describe the recommended quality controls measures for welds

2.5 Explain inspection and testing methods for the following:

- hardness testing
- rockwell method
- brinell method
- vickers method
- metallography
- weld joint cross-sections
- polishing
- etching
- analyzing
- macro-examination
- micro-examination
- hydrostatic testing
- leak testing
- vacuum testing
- fracture testing
- chemical analysis

Number: S0935.3

Title: **Shielded Metal Arc Welding**

Duration: Total 12 hours Theory 3 hours Practical 9 hours

Cross-Reference to Training Standard: 5472.0, 5473.0, 5474.0, 5475.0, 5476.0, 5478.0, 5479.0, 5480.0, 5484.0

General Learning Outcomes

Upon successful completion the apprentice is able to perform Shielded Metal Arc Welding (SMAW) butt welds on mild steel.

Learning Outcomes and Content

- 3.1 Describe the Shielded Metal Arc Welding procedure variables and their effect on quality and productivity:
- pre-selected variables
 - joint design and fit-up
 - consumables
 - primary variables (conducted prior to welding)
 - current type and polarity
 - amperage
 - pre-heat
 - electrode size
 - secondary variables (conducted during welding)
 - travel speed
 - arc length
 - work angle
 - electrode angle
 - technique
 - whipping
 - weaving
 - stringer
 - multiple passes
 - drag
- 3.2 Perform Shielded Metal Arc Welding procedures to produce butt welds in pipe

Number: S0935.4

Title: **Metal Inert Gas Welding**

Duration: Total 3 hours Theory 3 hours Practical 0 hours

Cross-Reference to Training Standard: 5472.0, 5473.0, 5474.0, 5475.0, 5476.0, 5478.0, 5479.0, 5480.0, 5484.0

General Learning Outcomes

Upon successful completion the apprentice is able to explain Metal Inert Gas (M.I.G.) welding.

Learning Outcomes and Content

- 4.1 Define the fundamentals of the Metal Inert Gas Welding process:
- modes of metal transfer
 - short-circuiting transfer
 - spray arc transfer
 - globular
 - pulsed
 - gas shielding
 - purpose
 - types
 - Argon / Helium
 - CO₂
 - mixed gases
 - triple mix gas
- 4.2 Explain safety concerns applicable to the Metal Inert Gas Welding process:
- UV radiation
 - appropriate helmet and filter plate
 - spatter and proper safety clothing
 - storage and handling of high pressure cylinders
 - flow meters
 - fumes and gases
 - oxygen depletion
- 4.3 Explain the function of the components of the Metal Inert Gas Welding process:
- fundamentals and characteristics of the constant voltage power source self-correcting arc gap
 - application of constant current power sources
 - wire feeders
 - spool guns
 - push type
 - push pull type

- drive rolls
 - liners
 - metallic
 - non-metallic
 - gas diffusers
 - contact tips / contact tubes
 - nozzles
 - water cooled guns
- 4.4 Explain the selection and characteristics of consumables necessary for Metal Inert Gas Welding for:
- short-circuit transfer
 - spray-arc transfer
 - optimal wire type and size (diameter)
 - filler metal classification system
 - low alloy
 - steels
 - stainless steels
 - aluminum
 - types and sizes
 - purpose of copper plating
 - shielding gas
 - types
 - flow rate
- 4.5 Describe the procedure variables for Metal Inert Gas Welding and their effect on quality and productivity:
- pre-selected variables
 - joint design and fit-up
 - consumables
 - wire
 - shielding gas
 - primary variables
 - current type and polarity
 - amperage
 - wire feed speed
 - wire diameter
 - voltage
 - preheat
 - secondary variables (conducted during welding)
 - travel speed
 - nozzle to work distance
 - work angle
 - gun angle to work

- technique
 - stringer
 - multi-passes
 - weaving
 - forehand
 - backhand
- 4.6 Explain the use of the term Gas Metal Arc Welding (GMAW)
- 4.7 View a demonstration of Metal Inert Gas Welding in various positions:
- horizontal
 - vertical
 - overhead

Number: S0935.5

Title: Tungsten Inert Gas Welding

Duration: Total 3 hours Theory 3 hours Practical 0 hours

Cross-Reference to Training Standard: 5472.0, 5473.0, 5474.0, 5475.0, 5476.0, 5478.0, 5479.0, 5480.0, 5484.0

General Learning Outcomes

Upon successful completion the apprentice is able to explain Tungsten Inert Gas (TIG) Welding.

Learning Outcomes and Content

5.1 Define the fundamentals of the Tungsten Inert Gas Welding process:

- non-consumable tungsten electrode
- gas shielding of weld
- advantages of the Tungsten Inert Gas Welding process
 - no spatter
 - all position capable
 - precision
 - weld light gauge materials
 - high quality welds
 - concentrated high-temperature arc
 - wide variety of applications and alloys
- limitations of the Tungsten Inert Gas Welding process
 - deposition rates
 - pre-cleaning required

5.2 Explain the safety concerns applicable to the Tungsten Inert Gas Welding process:

- arc radiation
- heat
- air quality
- fumes
- gases
- oxygen depletion
- electrical
- high frequency
- thorium
- high pressure cylinders

- 5.3 Explain the required equipment and components for the Tungsten Inert Gas Welding process including:
- power source
 - fundamentals and characteristics of the constant current power source
 - equipment controls
 - welding currents
 - AC
 - DC electrode negative
 - DC electrode positive
 - high frequency (HF) circuit
 - contractor and current control methods
 - manual control
 - remote controls
 - foot control
 - torch thumbwheel
 - shielding gas supply system
 - cylinders or bulk systems
 - regulator
 - flow meter
 - hoses
 - torches
 - air and water cooled
 - amperage rating
 - coolant circulators
 - collet and body
 - nozzle
 - gas lens
- 5.4 Explain the characteristics and selection considerations for consumables used for Tungsten Inert Gas Welding on steel:
- shielding gas
 - type
 - flow rate (Imperial and metric)
 - filler material
 - type (alloy) and classification
 - size
 - tungsten electrode
 - type and grade
 - size
 - conditioning and contamination control

- 5.5 Explain the set-up and control of the process variables for the Tungsten Inert Gas Welding process:
- electrical
 - current type and polarity
 - amperage adjustment
 - shielding gas
 - flow rate
 - backing gas and purging
 - filler rod selection
 - diameter
 - arc initiation methods
 - scratch start
 - lift start
 - high frequency start
 - technique
 - torch and filler rod angles
 - arc length
 - travel speed
 - filler rod addition method
- 5.6 Explain the use of the term Gas Tungsten Arc Welding (GTAW)
- 5.7 View a demonstration of Tungsten Inert Gas Welding to produce butt welds in the following positions:
- horizontal
 - vertical
 - overhead

Evaluation Structure		
Theory Testing	Practical Application Testing	Final Assessment
55%	15%	30%



**Skilled
Trades**
Ontario

**Métiers
spécialisés**
Ontario

skilledtradesontario.ca



Steamfitter/Pipefitter