



**Skilled
Trades**
Ontario

**Métiers
spécialisés**
Ontario

Apprenticeship
Curriculum Standard

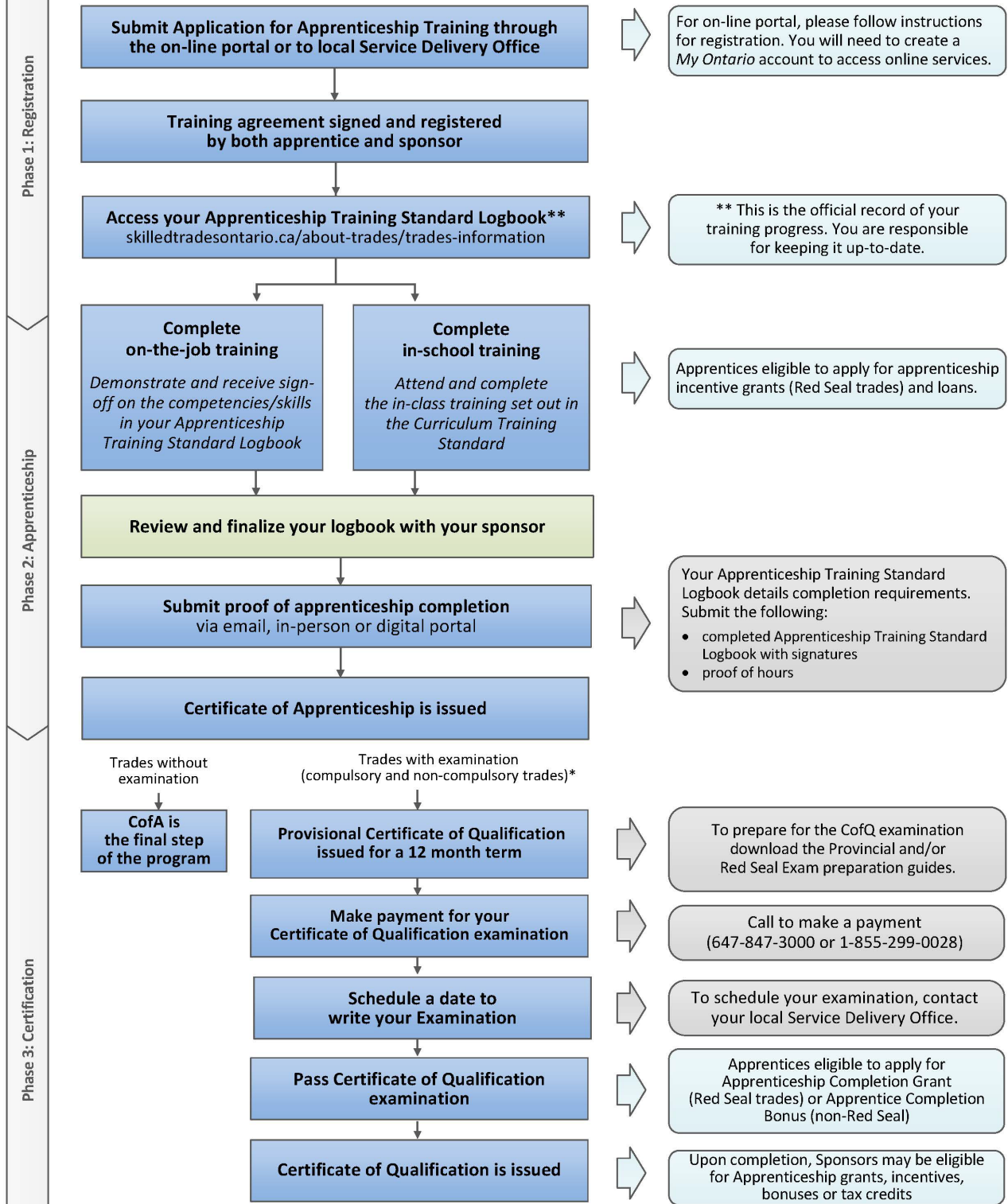
Construction Millwright

Level 3

426A

2011

Apprenticeship Pathway to a Certificate of Qualification



* For a list of trades subject to a certification examination, visit: skilledtradesontario.ca

Table of Contents

Preface.....	1
Introduction	2
Level 3.....	4
Reportable Subject Summary-Level 3.....	5
S1721 Drawings and Schematics 3	6
S1721.1 Drawings and Schematics 3.....	7
S1722 Workshop Practice 3.....	8
S1722.1 Machine Tools 3 and Work Project	9
S1723 Machine Installation, Set-Up and Field Layout.....	10
S1723.1 Machine Installation, Set-Up and Field Layout.....	11
S1724 Machine Technology 3.....	13
S1724.1 Material Handling Systems	14
S1724.2 Prime Movers and Ancillary Equipment	17
S1724.3 Fans and Blowers	18
S1724.4 Preventive and Predictive Maintenance	19
S1725 Fluid Power.....	22
S1725.1 Pneumatic Systems	23
S1725.2 Hydraulic Systems	25
APPENDIX C: Tools and Equipment List	29

Please Note: This Standard has been revised to reflect the visual identity of Skilled Trades Ontario (STO) which replaced the Ontario College of Trades on January 1, 2022. The content of this Standard may refer to the former organization; however, all trade specific information or content remains relevant and accurate based on the original date of publishing.

Please refer to STO's website: skilledtradesontario.ca for the most accurate and up to date information. For information about BOSTA and its regulations, please visit [Building Opportunities in the Skilled Trades Act, 2021 \(BOSTA\)](#).

Any updates to this publication are available on-line; to download this document in PDF format, please follow the link: Skilled Trades Ontario.ca.

© 2022, Skilled Trades Ontario. All rights reserved. No part of this publication may be reproduced in any form whatsoever without the prior permission from Skilled Trades Ontario.

Maintained with transfer to Skilled Trades Ontario 2011 (V100)

Preface

This curriculum standard for the Construction Millwright trade program is based upon the on-the-job performance objectives, located in the industry-approved training standard.

This is the third level of 3 levels of training. The Reportable Subjects Summary chart (located on page 5) summarizes the training hours for each reportable subject.

The curriculum identifies the learning that takes place in-school. The in-school program focuses primarily on the theoretical knowledge and the essential skills required to support the performance objectives of the Apprenticeship Training Standards.

Employers/Sponsors are expected to extend the apprentice's knowledge and skills through practical training on a work site. Regular evaluations of the apprentice's knowledge and skills are conducted throughout training to verify that all apprentices have achieved the learning outcomes identified in the curriculum standard.

It is not the intent of the in-school curriculum to perfect on-the-job skills. The practical portion of the in-school program is used to reinforce theoretical knowledge. Skill training is provided on the job.

Please refer to Skilled Trades Ontario website (www.skilledtradesontario.ca) for the most accurate and up-to-date information about Skilled Trades Ontario. For information on *Building Opportunities in the Skilled Trades Act, 2021 (BOSTA)* and its regulations, please visit [Building Opportunities in the Skilled Trades Act, 2021, S.O. 2021, c. 28 - Bill 288 \(ontario.ca\)](http://www.skilledtradesontario.ca/building-opportunities-in-the-skilled-trades-act-2021-s.o.-2021-c.-28-bill-288)

Pre-requisites

In order to advance to Level 2 of the apprenticeship program, an individual must have completed all of the units outlined in Level 1. Similarly, in order to advance to Level 3 of the program, an individual must have completed all of the units outlined in Level 1 and 2.

Hours Disclaimer (if applicable)

It is agreed that Training Delivery Agents (TDAs) may need to make slight adjustments (with cause) according to particular apprentice needs and may deviate from the unit sequencing and the prescribed practical and theoretical hours shown within the standard. However, all TDAs will comply with the hours at the reportable subject level.

Suggested Equipment for Training Delivery Agencies

The listing of tools on pages 29 to 35 does not list minimum quantities based on the understanding that the delivering TDA is in the best position to determine the need based on its delivery methodology.

Personal and Safety Equipment: Personal protective equipment is at the discretion of the TDA who must conform to Ontario Provincial Health and Safety Regulations.

Introduction

The curriculum has been developed in keeping with the prescribed training standards of Workplace Training Branch, Ministry of Labour, Immigration, Training and Skills Development. The curriculum will allow for easy adaptation to the current reporting structures for the respective program phases and to alternate delivery formats.

For easy reference, a time allocation has been included for each respective unit, along with the Theory/Practical breakdown for the delivery of the performance outcomes.

The continual introduction of innovative techniques and more complex equipment is resulting in increasing demands for tradespeople who are not only skilled in the practical aspects of the trade, but who also have a sound theoretical knowledge of the requirements to inspect, diagnose, repair and service. The curriculum has been developed to provide this theoretical knowledge and to offer some practical applications to complement the on-the-job work experiences of the Construction Millwright apprentice.

The outcomes of the curriculum, therefore, are to provide a basis for:

- a. sound theoretical training to meet the challenges presented by the increasingly more complex designs and testing techniques.
- b. the acquisition of fundamental skills of the trade through exposure to practical applications.
- c. developing in the apprentice's high standards of craftsmanship, problem-solving skills and personal pride in their respective trades.
- d. developing desirable work attitudes and a keen sense of responsibility, particularly in regard to public and personal safety.

The curriculum has also been designed to give the instructor every reasonable opportunity for flexibility and innovation, without unnecessary deviation from the course requirements (as determined by the Provincial Advisory Committee and as prescribed in the regulation for the trades). Since the scope of the prescribed curriculum is quite extensive, the apprentices will be expected to reinforce the acquired knowledge through regular, independent out-of-classroom assignments. In keeping with sound teaching methodologies, the curriculum has been presented in a chronological sequence. However, the actual application of the sequence may differ somewhat between colleges because of scheduling, staffing and utilisation of facilities.

The curriculum includes specific references to the training standards of the Ministry of Labour, Immigration, Training and Skills Development. While the references to various terminal performance outcomes in the Training Standards have been linked to the respective in-school outcomes, employers should not assume complete coverage in all aspects of the outcome. The in-school delivery focuses primarily on the knowledge required to master the respective performance outcomes outlined in the Training Standards. Employers, therefore, are expected to complete the delivery of these respective outcomes by applying the prescribed in-school knowledge to the required practical learning experienced in the work setting.

To ensure that successful students will be able to satisfy the individual outcomes according to the performance criteria, specific times have been allocated in the respective areas to allow for some application enhancement. It is of utmost importance that all application assignments relate to prescribed experiences only. Time constraints will not permit engaging students in irrelevant tasks of limited learning benefits that are unrelated to the curriculum outcomes.

Regular evaluations of the apprentices' learning achievements must be performed in both theory and application throughout the program to assure consistency in learning outcome expectations.

Implementation Date:
August 2011

Level 3

Reportable Subject Summary-Level 3

Number	Reportable Subjects	Hours Total	Hours Theory	Hours Practical
S1721	Drawings and Schematics 3	16	16	0
S1722	Workshop Practice 3	33	3	30
S1723	Machine Installation, Set-up and Field Layout	80	42	38
S1724	Machine Technology 3	33	28	5
S1725	Fluid Power	78	58	20
	Total	240	147	93

Number: S1721
Title: **Drawings and Schematics 3**
Duration: Total Hours: 16 Theory: 16 Practical: 0
Prerequisites: Level 1 and Level 2
Co-requisites: S1721.1 Drawings and Schematics 3

Instructional/Delivery Strategies:

- Assignments related to theory and appropriate application skills.
- Minimum of one mid-term test during the eight-week term.
- Final exam at end of term.
- Periodic quizzes.

Number: S1721.1
Title: **Drawings and Schematics 3**
Duration: Total Hours: 16 Theory: 16 Practical: 0
Cross Reference to Training Standard Performance Objectives: U6143.0

General Learning Outcome

To develop the apprentice's ability to effectively read and interpret trade specific drawings.

Learning Outcomes and Content

- 1.1.1 Read, identify and determine size, location and elevation of items related to machine installation.
- 1.1.2 Draw and sketch machine layout and installation diagrams.
- 1.1.3 Read and interpret plant layout drawings.

Evaluation Structure		
Theory Testing	Practical Application Testing	Final Assessment
50%	0%	50%

Number:	S1722		
Title:	Workshop Practice 3		
Duration:	Total Hours: 33	Theory: 3	Practical: 30
Prerequisites:	Level 2		
Co-requisites:	S1722 .1 Machine Tools 3 and Work Project		

Instructional/Delivery Strategies:

- Assignments related to theory and appropriate application skills.
- Minimum of one mid-term test during the eight-week term.
- Final exam at end of term.
- Periodic quizzes.

Number: S1722.1
Title: Machine Tools 3 and Work Project
 Duration: Total Hours: 33 Theory: 3 Practical: 30
 Cross Reference to Training Standards: U6145.0

General Learning Outcome

To develop the apprentice’s ability to set-up and operate shop equipment and tools in order to produce component parts to prescribed tolerances and standards. To use all shop equipment to complete a specific work project.

Learning Outcomes and Content

2.1.1 Set-up and operate conventional machine tools, such as:

- lathe
- milling machine
- surface grinder
- radial drill
- pedestal drill
- cut-off saw
- band saw

2.1.2 Set-up and operate machine tool accessories including:

- three and four jaw chucks
- dividing heads
- face plates
- magnetic chucks
- taper turning attachments

2.1.3 Read and interpret drawings to produce components to prescribed tolerances.

2.1.4 Complete specific work projects as required.

Evaluation Structure		
Theory Testing	Practical Application Testing	Final Assessment
45%	5%	50%

Number:	S1723		
Title:	Machine Installation, Set-Up and Field Layout		
Duration:	Total Hours: 80	Theory: 42	Practical: 38
Prerequisites:	Level 2		
Co-requisites:	S1723.1	Machine Installation, Set-Up and Field Layout	

Instructional/Delivery Strategies:

- Assignments related to theory and appropriate application skills.
- Minimum of one mid-term test during the eight-week term.
- Final exam at end of term.
- Periodic quizzes.

Number: S1723.1
Title: **Machine Installation, Set-Up and Field Layout**
Duration: Total Hours: 80 Theory: 42 Practical: 38
Cross Reference to Training Standard Performance Objectives: U6141.0, U6142.0, U6143.0, U6146.0, U6147.0, U6151.0, U6155.0

General Learning Outcome

To develop the apprentice's knowledge of safety procedures in rigging and machinery moving, final installation and setup, and field layout.

Learning Outcomes and Content

- 3.1.1 Describe elements of a safe hoisting and rigging operation as they pertain to machinery movement and installation, including:
- work crew planning and communication
 - ability to follow a critical path to final placement
 - international hand signals and overhead crane signals
 - load weight estimation
 - center of gravity
 - attachment, jacking and lifting points
 - floor and structural conditions
 - lifting equipment capacities
- 3.1.2 Perform calculations based on basic principles of strength of materials, such as:
- stress and strain
 - tension
 - compression
 - shear
 - torsion
 - stresses in beams and columns
- 3.1.3 Perform basic rigging operations using various sling configurations.
- 3.1.4 Inspect and maintain rigging and hoisting equipment.

- 3.1.5 Describe and practice safe usage of:
- jacks
 - rollers
 - come-alongs
 - chain falls
 - boom trucks
 - overhead cranes
 - lift trucks
 - tuggers
- 3.1.6 Install machinery at a specified location according to engineering drawings.
- 3.1.7 Layout and establish datum lines for the location of machinery and equipment, using instruments and tools such as:
- piano wire
 - plumb bobs
 - chalk lines
 - optical levels
 - theodolite
 - total station
 - lasers
- 3.1.8 Maintain and store precision measuring devices.
- 3.1.9 Identify, select and use appropriate measuring devices to align equipment, establish datum lines, references points, and bench marks, and measure acute, obtuse and compound angles.

Evaluation Structure		
Theory Testing	Practical Application Testing	Final Assessment
25%	25%	50%

Number:	S1724		
Title:	Machine Technology 3		
Duration:	Total Hours: 33	Theory: 28	Practical: 5
Prerequisites:	Level 2		
Co-requisites:	S1724.1	Material Handling Systems	
	S1724.2	Prime Movers and Ancillary Equipment	
	S1724.3	Fans and Blowers	
	S1724.4	Preventive and Predictive Maintenance	

Instructional/Delivery Strategies:

- Assignments related to theory and appropriate application skills.
- Minimum of one mid-term test during the eight-week term.
- Final exam at end of term.
- Periodic quizzes.

Number: S1724.1
Title: **Material Handling Systems**
Duration: Total Hours: 13 Theory: 10 Practical: 3
Cross Reference to Training Standard: U6152.0

General Learning Outcome

To develop the apprentice's understanding of the principles of operation for various material handling systems.

Learning Outcomes and Content

- 4.1.1 Describe the principles and understand the importance of proper site preparation.
- 4.1.2 Identify type, purpose, and installation and adjustment procedures for the following material handling systems:
- belt
 - chain
 - bucket
 - roller
 - screw
 - air
- 4.1.3 Identify and select for specific applications:
- conveyor supports and trusses
 - drive terminals and power drives
 - pulley drives
- 4.1.4 Identify and select for specific applications:
- screw take-ups
 - chain adjusted gravity take-up
 - internal take-up
 - telescoping take-up
 - chain take-up
 - fixed tail end
- 4.1.5 Describe methods of belt splicing and fastenings for specific applications.
- 4.1.6 Describe and perform methods of aligning and tracking conveyor systems.

- 4.1.7 Identify type and describe the function and application of the following bucket elevators:
- centrifugal discharge
 - continuous bucket
 - super-capacity
 - positive discharge
- 4.1.8 Identify type and describe the function and application of the following bucket elevator components:
- casings
 - head
 - boot
 - belt
 - chain
- 4.1.9 Identify type and describe the function and application of screw conveyors and their components to include:
- screws, type of flight and pitch
 - troughs and covers
 - hangers
 - drive assemblies
 - screw conveyor designations
- 4.1.10 Identify and describe the function and application of the following types of pneumatic conveyors:
- vacuum systems
 - pressurized systems
 - low, medium, high pressure systems
- 4.1.11 Identify and describe the function and application of the following pneumatic conveyor components:
- feeders
 - regulation gates
 - blow tanks
 - fans and blowers
 - air slides
 - cyclones

4.1.12 Identify type and describe the function and application of the following roller conveyors:

- gravity roller
- live roller
- roller bed

4.1.13 Identify and describe the function and application of the following roller conveyor components:

- rollers
- roll cases
- bearings
- belts
- drivers
- roller curves

Number: S1724.2
Title: **Prime Movers and Ancillary Equipment**
Duration: Total Hours: 4 Theory: 4 Practical: 0
Cross Reference to Training Standard: U6162.0

General Learning Outcome

To develop the apprentice's basic knowledge of the types and applications of prime movers.

Learning Outcomes and Content

4.2.1 Identify and describe types of prime movers including:

- steam turbines
- gas turbines
- water turbines
- wind turbines
- internal combustion engines
- electric motors
- generators

Number: S1724.3
Title: **Fans and Blowers**
Duration: Total Hours: 4 Theory: 4 Practical: 0
Cross Reference to Training Standard: U6158.0

General Learning Outcome

To develop the apprentice's knowledge of the functions of fans and blowers.

Learning Outcomes and Content

4.3.1 Identify and explain the operation and function of fans and blowers for:

- ventilation
- material handling
- dust collection
- cooling towers
- induced and forced draft

Number: S1724.4
Title: **Preventive and Predictive Maintenance**
Duration: Total Hours: 12 Theory: 10 Practical: 2
Cross Reference to Training Standard: U6163.0

General Learning Outcome

To develop the apprentice's knowledge of procedures, equipment used, and the benefits that accrue from a preventive and predictive maintenance program.

Learning Outcomes and Content

- 4.4.1 Describe vibration and how it affects the mechanical condition of rotating equipment.
- 4.4.2 Describe equipment monitoring techniques by:
- individual machine
 - equipment routes or circuits
 - alarm levels for each monitoring point
- 4.4.3 Understand and describe the characteristics of vibration:
- frequency
 - displacement
 - velocity
 - acceleration
 - bearing defect energy
 - phase
- 4.4.4 In reference to vibration characteristics, identify when to measure:
- velocity
 - displacement
 - acceleration
 - bearing defect energy
 - frequency related to rotations per minute (rpm).
- 4.4.5 Identify and operate fixed and portable vibration measurement equipment and accessories, including velocity, acceleration and non- contact transducers.

- 4.4.6 Assess vibration severity by:
- using general vibration severity charts
 - spectral signatures
 - trending
 - troubleshooting
- 4.4.7 Describe machinery maintenance programs:
- breakdown
 - preventative (scheduled)
 - predictive
 - proactive
- 4.4.8 Identify the benefits of a predictive maintenance program, such as:
- prolongs machinery life
 - minimizes unscheduled down time
 - reduces maintenance costs
 - reduces noise
 - eliminates unnecessary overhauls and standby equipment
 - improves the quality of performance, thereby improving safety
- 4.4.9 Identify the significance of recording equipment history (to maximize reliability and life span):
- maintenance data
 - failure analyses findings
 - outages
- 4.4.10 Describe methods of recording footprint/signature of machinery.
- 4.4.11 Describe/demonstrate proper preventive and predictive maintenance procedures for the lubrication of equipment by:
- ensuring that all equipment is pre-lubed before start-up
 - monitoring/adjusting drip, constant, bath splash type lubrication systems
 - installing the correct lubricant and filter for each application
 - identifying proper sample point positioning to obtain a representative sample for oil analysis
 - conduct oil analysis-moisture, fluoroscopic
 - oil handling and storage

- 4.4.12 Identify and describe the use of non-destructive test equipment, such as:
- dye penetrant
 - visual inspection
 - magneticparticle (magnaflux)
 - ultrasonics
 - hydrostatic testing
 - x-ray
 - infrared thermal imaging/temperature measurement
 - acoustic emission
 - decibel meter
- 4.4.13 Describe basic computer concepts as they pertain to maintenance software programs.
- 4.4.14 Use computer software programs to administer, record, schedule and monitor predictive and maintenance activities in conjunction with:
- vibration measurement (history, projected failure)
 - equipment history (overhaul, spare parts)
 - maintenance and shut down scheduling
- 4.4.15 Describe methods and procedures for start-up and run-in, ensuring that all safety devices, relief valves and lock-outs are installed and operational.

Evaluation Structure		
Theory Testing	Practical Application Testing	Final Assessment
45%	5%	50%

Number:	S1725		
Title:	Fluid Power		
Duration:	Total Hours: 78	Theory: 58	Practical: 20
Prerequisites:	Level 2		
Co-requisites:	S1725.1	Pneumatic Systems	
	S1725.2	Hydraulic Systems	

Instructional/Delivery Strategies:

- Assignments related to theory and appropriate application skills.
- Minimum of one mid-term test during the eight-week term.
- Final exam at end of term.
- Periodic quizzes.

Number: S1725.1
Title: **Pneumatic Systems**
Duration: Total Hours: 24 Theory: 14 Practical: 10
Cross Reference to Training Standard: U6160.0

General Learning Outcome

To develop the apprentice's knowledge of the basic principles and applications of pneumatics and compressed air safety as it relates to pneumatic systems. To develop the apprentice's ability to identify, select and install pipe systems and valves for specific applications.

Learning Outcomes and Content

- 5.1.1 Describe and apply safety procedures when working on pneumatic systems.
- 5.1.2 Describe the basic principles and applications of pneumatics.
- 5.1.3 Explain Boyle's Law and Charles' Law as they apply to pneumatics.
- 5.1.4 Read and interpret symbols for all pneumatic components using both ANSI and ISO systems.
- 5.1.5 Build and troubleshoot pneumatic systems using drawings and test instruments.
- 5.1.6 Identify and explain the operation of various types of cylinders:
 - single and double acting
 - single and double rod
- 5.1.7 Identify and explain the operation of various types of pneumatic motors.
- 5.1.8 Identify and explain the operation and function of various pressure control valves:
 - unloading
 - relief
 - sequence
 - pressure reducing

- 5.1.9 Identify and explain the operation and function of various directional control valves:
- sliding spool, poppet and rotary types
 - two, three and four position
 - two, three, four and five way valves
 - different methods of actuation
- 5.1.10 Identify and explain the operation and function of various flow control valves and their method of operation:
- meter in
 - meter out
- 5.1.11 Identify and explain the operation and function of the following types of pneumatic valves:
- quick exhaust
 - time delay

Number: S1725.2
Title: **Hydraulic Systems**
Duration: Total Hours: 54 Theory: 44 Practical: 10
Cross Reference to Training Standard: U6161.0

General Learning Outcome

To develop the apprentice's knowledge of basic hydraulic principles and the ability to perform pertinent hydraulic calculations, and to install, maintain and troubleshoot components.

Learning Outcomes and Content

- 5.2.1 Describe and apply safety procedures when working on hydraulic systems.
- 5.2.2 Define the following:
- Pascal's Law
 - Bernoulli's Principle
- 5.2.3 Perform calculations and define the following hydraulic terms:
- pressure
 - force
 - area
 - horsepower
 - flow rate
- 5.2.4 Describe and apply the basic principles of fluid mechanics including:
- properties of fluids
 - flow patterns
 - pipe losses
 - Bernoulli's Principle
- 5.2.5 Read and interpret symbols for all hydraulic components using both ANSI and ISO systems.
- 5.2.6 Assemble and troubleshoot hydraulic systems using circuit drawings.

- 5.2.7 Identify and explain the operation of the following types of cylinders:
- single and double acting
 - single and double rod
 - differential
 - cushioned
- 5.2.8 Identify and explain the operation and function of the following types of hydraulic motors:
- vane
 - gear
 - axial piston
 - fixed and variable displacement
- 5.2.9 Identify and explain the operation and function of the following types of check valves:
- in line
 - right angle
 - pilot to open
 - pilot to close
- 5.2.10 Identify and explain the operation and function of the following types of pressure control valves:
- relief
 - unloading
 - counterbalance
 - sequence
 - pressure reducing
 - brake
 - back pressure
- 5.2.11 Identify and explain the operation and function of the following types of directional control valves:
- sliding spool, poppet and rotary types
 - two, three and four position
 - two, three, four and five way
 - servo and proportional
 - solenoid, manual and pilot actuated
 - open, closed, tandem and float center

- 5.2.12 Identify and explain the operation and function of the following types of flow control valves and circuits:
- needle, restrictor, pressure and temperature compensated
 - meter in
 - meter out
 - bleed-off
- 5.2.13 Identify and explain the operation and function of cartridge valves.
- 5.2.14 Identify and explain the operation and function of the following types of hydraulic pumps:
- gear
 - vane
 - reciprocating piston
 - plunger
 - axial piston
 - bent axis
 - radial piston
 - fixed and variable displacement
- 5.2.15 Explain proper installation procedures.
- 5.2.16 Explain cavitation.
- 5.2.17 Identify and explain the operation and function of hydraulic intensifiers.
- 5.2.18 Identify and explain the operation and function of various types of hydraulic accumulators:
- weight
 - spring
 - gas
- 5.2.19 Explain the installation and charging procedures for gas accumulators.
- 5.2.20 Identify and explain the operation and function of heat exchangers in hydraulic systems.
- 5.2.21 Identify and explain the operation and function of various types of:
- filters
 - strainers
 - hydraulic reservoirs

- 5.2.22 Identify and classify various hydraulic fluids appropriate for different hydraulic circuits.
- 5.2.23 Identify and select the various sizes and types of piping, tubes and hoses available for specific hydraulic systems.
- 5.2.24 Identify and explain the following sealing components available for hydraulic piping:
- O rings
 - quad rings
 - compression fittings

Evaluation Structure		
Theory Testing	Practical Application Testing	Final Assessment
40%	10%	50%

APPENDIX C: Tools and Equipment List

The Master Tool List has been developed in conjunction with the Industrial Mechanic (Millwright) and Construction Millwright Curriculum Advisory Committee and the Construction Millwright Provincial Advisory Committee as a requirement for Training Delivery Agents delivering of the program. Actual numbers of tools or equipment required would depend upon method of delivery and number of students in a program. Items marked with an asterisk (*) are considered desirable, but not absolutely necessary.

Level	Description
I	Socket Sets
I	Torque Wrenches
I	Punch Sets
I	Pairs of Pliers
I	Ball Peen Hammers
I	Screwdriver Sets
I	Chisel Sets
I	Pry Bar Sets
I	Scrapers
I	Assorted Files
I	Hacksaws
I	Drill Indexes with Twist Drills
I	Metric Tap & Die Sets
I	Standard Tap & Die Sets
I	Tap Handles
I	Reamer Sets
I	Tin Snips
I	Rivet Guns
I	Grease Guns
I	Funnel
I	Steel Rules
I	Tape Measures
I	Squares
I	Plumb Bobs
I	0 – 1in Micrometers
I	0 – 25mm Micrometers
I	0 – 150mm Metric Depth Micrometers

Level	Description
I	Sets of Standard Depth Micrometers
I	0 – 6in Inside Micrometers
I	0 – 150mm Inside Micrometers
I	1 – 2in Micrometers
I	25 – 50mm Micrometers
I	3in Micrometers
I	12in Vernier Height Gauges
I	Sine Bars
I	Precision Measurement Rigs
I	Standard 6in Vernier Calipers
I	Metric Vernier Micrometer
I	Master Level
I	Telescoping Gauge Sets
I	Hole Gauge Sets
I	Radius Gauge Sets
I	Standard Gauge Block Set
I	Metric Gauge Block Set
I	.001in Dial Indicators
I	.0001in Dial Indicators
I	Standard Thread Gauge Sets
I	Metric Thread Gauge Sets
I	3/8in Power Hand Drills
I	3/8in Angle Drills
I	Magnetic Drills
I	4in Angle Grinders
I	Die Grinders
I	Impact Wrenches
I	Powder Actuated Gun
I	Lock Out & Isolation Simulators
I	Safety Harnesses & Fall Arrest Equipment
I	Scott Air Packs*
I	Different Examples of Fire Extinguishers
I	Face Shields
I	Arc Welding Shields
I	Safety Locks

Level	Description
I	Safety Glasses (student supplied)
I	Hearing Protectors (student supplied)
I	First Aid Kits
I	Welders Gloves (student supplied)
I	Welding Glasses
I	Air Tool Compressor (may be a plant compressor)
I	Metal Cutting Lathes with Threading Capability
I	Vertical Milling Machines
I	Radial Drill Presses
I	Drill Presses
I	Power Hacksaw
I	Bandsaw
I	Cut Off Saws
I	Hydraulic Press
I	Pedestal Grinders
I	Granite Surface Tables
I	V Blocks
I	Angle Plates
I	Heat Treat Oven*
I	Oil Quench Tank
I	Forge
I	Rockwell or Brinell Hardness Tester*
I	Automatic Lubrication System Trainers*
I	Overhead Crane / Hoist*
I	Pneumatic Hoist
I	Lifting Slings
I	Lifting Chains
I	Assortment of Lifting Hardware
I	Load Skates
I	Hydraulic Jacks
I	Assortment of Blocks
I	Chainfalls
I	Portable Hydraulic Lift
I	Fork Lift*
I	Arc Welding Units

Level	Description
I	Oxy-acetylene Units
I	Brooms
I	Shovels
I	Lathe Brushes
I	Various Lathe High Speed Cutting & Parting Tools
I	Various Lathe Carbide Cutting Tools
I	Pedestal Grinder Wheels
I	Standard Bolt, Nut & Washer Assortment
I	Metric Bolt, Nut & Washer Assortment
I	Dowel Pin Assortment
I	Circlip Assortment
I	Cotter Pin Assortment
I	Loctite Assortment
I	Rivet Assortment
I	Grease Assortment
I	Oil Assortment
I	Drafting & Sketching Kits
I	Tap Drill Charts
I	Cutting Speed Charts
I	Load Charts
I	Tubing Benders
I	Tubing Cutters
I	Pipe Cutters
I	Bearing Pullers
I	Straightedge
I	Induction Bearing Heater
II	Pipe Bender
II	Power Jacks
II	Pipe Threading Machine
II	Power Shear
II	Horizontal Milling Machine
II	Boring Heads
II	Surface Grinders
II	Surface Grinder Magnetic Chunks
II	Dividing Head

Level	Description
II	Laser Alignment Units
II	Arbor Press
II	Power Hone
II	Various End Mills
II	Carbide Insert Milling Cutters
II	Surface Grinder Wheels
II	O Ring Assortment
II	Assortment of Pipe Fittings
II	Different Examples of Various Plain, Journal & Sleeve Bearings
II	Different Examples of Bearing Housings & Gearboxes
II	Examples of Various Anti-friction Bearings and Assorted Failures
II	Different Examples of Seals
II	Different Examples of Packing
II	Example of V Belt Drive
II	Example of Chain Drive
II	Example of Magnetic, Fluid or Centrifugal Coupling
II	Example of Piston Compressor
II	Example of Screw Compressor
II	Example of Wet and Dry Compressor
II	Example of Roots Blower or Lobe Compressor
II	Assortment of Filter Examples
II	Example of Dryer
II	Example of Cooler
II	Bearing Installation Set ups
II	Gearbox Training Units with Motors, Couplings, etc.
II	Coupling Alignment Units
II	Compressor Training Units
II	Pneumatic Training Units
II	Dumpy Levels
II	Tilting Levels
II	Theodolite
II	Auto Level
II	12in Precision Levels
II	Block Level
III	Total Station

Level	Description
III	Vibration Analyzers
III	Dust Collector*
III	Programmable Logic Controllers
III	Computers with PPM Programs
III	Computer Printer
III	Assortment of Anchors
III	Electrical Multi-testers
III	Tachometer*
III	Ultrasonic Gun*
III	Thermographic Unit*
III	Roller Conveyor System Trainer
III	Belt Conveyor System Trainer
III	Example of Vibrator*
III	Example of Screw, Chain, Monorail or Bucket Conveyor
III	Fly Ball Governor
III	Example of AC Motor
III	Example of DC Stepping Motor
III	Example of Internal Combustion Motor*
III	Example of Turbine*
III	Example of Multi-stage Fan*
III	Example of Shaker Bagger*
III	Assortment of Pneumatic Valves
III	Assortment of Pneumatic Actuators
III	Different Examples of Hydraulic Piston Pumps
III	Different Examples of Hydraulic Vane Pumps
III	Different Examples of Hydraulic Pumps Other Than Piston or Vane
III	Assortment of Filters and Contamination Control Devices
III	Different Examples of Directional Valves
III	Different Examples of Proportional Valves
III	Example of Mechanical Hydraulic Servo Proportioning
III	Different Examples of Linear Hydraulic Actuators
III	Example of Rotary Hydraulic Actuator
III	Example of Electrical Servo Proportioning Valves
III	Example of Fiber Optics*
III	Hydraulic Training Units

Level	Description
III	Hydraulic Pump Test Units
III	Hydraulic Troubleshooting Unit
III	Ironworker
III	Brake
III	Shears
III	Rollers
III	Various Electrical Sensors
III	Electrical Breakers
III	Electrical Fuses

* These items are considered desirable, but not absolutely necessary.



**Skilled
Trades**
Ontario

**Métiers
spécialisés**
Ontario

skilledtradesontario.ca